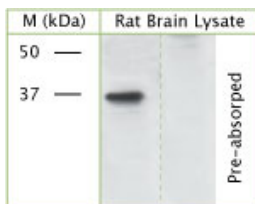


## Rabbit antibody to phospho S41 GAP 43

<b>Code</b>	OSG00011G
<b>ID Tag</b>	Rb654-060908-G
<b>Unit size</b>	500 Å, Åµg
<b>Immunogen</b>	A synthetic peptide to phospho S41 of human Axonal membrane protein GAP-43 conjugated to an immunogenic carrier protein was used as the antigen. The peptide is homologous in many species including rat, mouse and zebrafish.
<b>Conjugate</b>	Unconjugated antibody
<b>Also known</b>	Neuromodulin, growth-associated protein 43, protein F1, Basp2, B-50
<b>Host</b>	NZ white rabbit
<b>Purity</b>	IgG
<b>Clonality</b>	Polyclonal
<b>Isotype</b>	Polyclonal, IgG
<b>Applications</b>	IHC, WB. Use at a concentration of 10-50 µg/ml. The optimal working concentration should be determined by the end user. Not yet tested in other applications. This antibody may also recognise the unphosphorylated form.
<b>Specificity</b>	Specific for GAP-43.
<b>Spcs X-react.</b>	Human, rat, mouse. Other species not yet tested.
<b>Format</b>	Lyophilised
<b>Reconstitution</b>	Reconstitute in 500 µl of sterile water. Centrifuge to remove any insoluble material.
<b>Storage</b>	Maintain the lyophilised/reconstituted antibodies frozen at -20°C for long term storage and refrigerated at 2-8°C for a shorter term. When reconstituting, glycerol (1:1) may be added for an additional stability. Avoid freeze and thaw cycles.
<b>Expiry Date</b>	12 months after reconstitution
<b>Shipping</b>	This item will be shipped to you at ambient temperature in a lyophilised form.
<b>Limitation</b>	For research use only



WB on rat brain lysate using Rabbit antibody to phospho S41 GAP 43 (OSG00011G) at 50 µg/ml concentration incubated overnight at 4°C. Pre-absorption of the antibody with the immunising peptide completely abolishes the detected band.

### Related Products

OSG00010W Rabbit antibody to phospho S41GAP 43