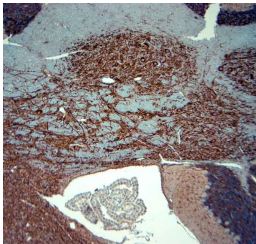


## Rabbit antibody to MAP2

<b>Code</b>	OSM00036G
<b>ID Tag</b>	Rb3926-13042022-G
<b>Unit size</b>	500 ug
<b>Immunogen</b>	A synthetic peptide from aa region 350-400 of mouse MAP2 conjugated to blue carrier protein was used as the antigen. The peptide is homologous in rat.
<b>Conjugate</b>	Unconjugated antibody
<b>Also known</b>	Microtubule-associated protein 2, MAP 2, MAP-2, MAP2R
<b>Host</b>	NZ white rabbit
<b>Purity</b>	IgG
<b>Clonality</b>	Polyclonal
<b>Isotype</b>	Polyclonal, IgG
<b>Applications</b>	IHC, WB. A working concentration of 10-50 $\mu\text{g/ml}$ is recommended. The optimal concentration should be determined by the end user. Not yet tested in other applications.
<b>Specificity</b>	Specific for MAP-2.
<b>Spcs X-react.</b>	Rat, mouse. Other species not yet tested.
<b>Format</b>	Lyophilised
<b>Reconstitution</b>	Reconstitute in 500 ul of sterile water. Centrifuge to remove any insoluble material.
<b>Storage</b>	Maintain the lyophilised/reconstituted antibodies frozen at -20C for long term storage and refrigerated at 2-8C for a shorter term. When reconstituting, glycerol (1:1) may be added for an additional stability. Avoid freeze and thaw cycles.
<b>Expiry Date</b>	12 months after reconstitution
<b>Shipping</b>	This item will be shipped to you at ambient temperature in a lyophilised form.
<b>Limitation</b>	For research use only



IHC-P on paraffin sections of mouse brain. The animal was perfused using Autoperfuser at a pressure of 130 mmHg with 300 ml 4% FA before being processed for paraffin embedding. HIER: Tris-EDTA, pH 9 for 20 min using Thermo PT Module. Blocking: 0.2% LFD in TBST filtered thru 0.2  $\mu\text{m}$ . Detection was done using Osenses rabbit anti Gp combined with HRP polymer from Leica following manufacturers instructions; DAB chromogen: Candela DAB chromogen from Osenses. Primary antibody: dilution 1: 500, incubated 30 min at RT. Sections were counterstained with Harris Hematoxylin.

---

### Related Products

OSM00030W Rabbit antibody to MAP2