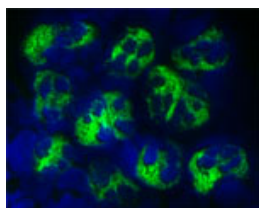


Rabbit antibody to LL-37

Code	OSC00028G
ID Tag	Rb259-270108-G
Unit size	500 ug
Immunogen	A synthetic peptide from human Cathelicidin antimicrobial peptide conjugated to blue carrier protein has been used as the antigen.
Conjugate	Unconjugated antibody
Also known	CAMP, CAP18, FALL39, FALL-39, 18 kDa cationic antimicrobial protein, CAP-18, hCAP-18, LL37, CRAMP, HSD26
Host	NZ white rabbit
Purity	IgG
Clonality	Polyclonal
Isotype	Polyclonal, IgG
Applications	IHC, WB. Use at a concentration of 10-50 ug/ml. The optimal working concentration should be determined by the end user. Not yet tested in other applications.
Specificity	Specific for Cathelicidin antimicrobial peptide.
Spcs X-react.	Human, other species not yet tested.
Format	Lyophilised
Reconstitution	Reconstitute in 500 Ål of sterile water. Centrifuge to remove any insoluble material.
Storage	Maintain the lyophilised/reconstituted antibodies frozen at -20Å°C for long term storage and refrigerated at 2-8Å°C for a shorter term. When reconstituting, glycerol (1:1) may be added for an additional stability. Avoid freeze and thaw cycles.
Expiry Date	12 months after reconstitution
Shipping	This item will be shipped to you at ambient temperature in a lyophilised form.
Limitation	For research use only



Staining of a cytospin preparation of peripheral blood mononuclear cells isolated from buffycoat. Cells were left to air dry and then fixed with cold acetone (90 seconds) and blocked with PBS containing 1% FCS and 0.1% saponin (blocking buffer) for 20 minutes. Cells were then washed twice in PBS and incubated with Rabbit antibody to LL-37 (OSC00028G), diluted 50 µg/ml: in blocking buffer, for 1 hour at room temperature. Cells were washed twice in PBS followed by incubation for 30 minutes with the FITC-labeled secondary antibody. Finally, cells were washed and nuclear counterstained with DAPI. The antibody selectively recognizes polymorphonuclear cells.

Related Products

OSC00155G	Mouse monoclonal to Cathelicidin: OSX12 clone
OSC00067W	Rabbit antibody to CAP-18 (70-110)
OSC00009W	Rabbit antibody to LL-37
OSC00066W	Rabbit antibody to CAP-18 (10-60)
OSC00039W	Rabbit antibody to scrambled Cathelicidin
OSC00038G	Sheep antibody to LL-37
OSC00037W	Sheep antibody to LL-37