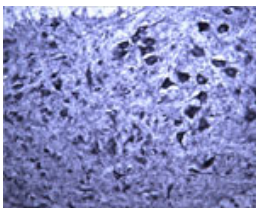


Rabbit antibody to SEC22B (2-50)

Code	OSS00040W
ID Tag	Rb326-200308-WS
Unit size	100 µl
Immunogen	A synthetic peptide from aa region 2-50 of human SEC22b conjugated to blue carrier protein was used as the antigen. The peptide is homologous in rat and mouse.
Conjugate	Unconjugated antibody
Also known	SEC22 vesicle-trafficking protein homolog B, SEC22 vesicle-trafficking protein-like 1, ERS24, ERS-24, Vesicle-trafficking protein SEC22b, SEC22L1, SEC22B
Host	NZ white rabbit
Purity	Whole serum
Clonality	Polyclonal
Isotype	Polyclonal, whole serum
Applications	IHC, WB. A dilution of 1 : 300 to 1 : 2000 is recommended. The optimal dilution should be determined by the end user.
Specificity	Specific for SEC22B.
Spcs X-react.	Human, rat, mouse. Other species not yet tested.
Format	Lyophilised
Reconstitution	Reconstitute in 100 µl of sterile water. Centrifuge to remove any insoluble material.
Storage	Maintain the lyophilised/reconstituted antibodies frozen at -20°C for long term storage and refrigerated at 2-8°C for a shorter term. When reconstituting, glycerol (1:1) may be added for an additional stability. Avoid freeze and thaw cycles.
Expiry Date	12 months after reconstitution
Shipping	This item will be shipped to you at ambient temperature in a lyophilised form.
Limitation	For research use only



IHC on rat spinal cord using Rabbit antibody to SEC22B (OSS00040W) at 1 : 1000 dilution. Pre-absorption of the antibody with the immunising peptide completely abolishes the immunostaining (not shown).

Related Products

OSS00048G Rabbit antibody to SEC22B (2-50)