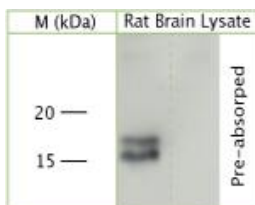


Rabbit antibody to VAMP 1

Code	OSS00038W
ID Tag	Rb349-200308-WS
Unit size	100 µl
Immunogen	A synthetic peptide from aa region 2-35 of mouse VAMP-1 conjugated to an immunogenic carrier protein was used as the antigen.
Conjugate	Unconjugated antibody
Also known	VAMP-1, Vamp1, Synaptobrevin-1, Syb1
Host	NZ white rabbit
Purity	Whole serum
Clonality	Polyclonal
Isotype	Polyclonal, whole serum
Applications	IHC, WB. A dilution of 1 : 300 to 1 : 2000 is recommended. The optimal dilution should be determined by the end user.
Specificity	Specific for VAMP1.
Spcs X-react.	Rat, mouse. Other species not yet tested.
Format	Lyophilised
Reconstitution	Reconstitute in 100 µl of sterile water. Centrifuge to remove any insoluble material.
Storage	Maintain the lyophilised/reconstituted antibodies frozen at -20°C for long term storage and refrigerated at 2-8°C for a shorter term. When reconstituting, glycerol (1:1) may be added for an additional stability. Avoid freeze and thaw cycles.
Expiry Date	12 months after reconstitution
Shipping	This item will be shipped to you at ambient temperature in a lyophilised form.
Limitation	For research use only



WB on rat brain lysate using Rabbit antibody to VAMP 1 (OSS00038W) at 1 : 1000 dilution. Pre-absorption of the antibody with the immunising peptide completely abolishes the detected bands.

Related Products

OSS00044G Rabbit antibody to VAMP-1