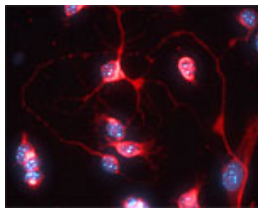


Rabbit antibody to VAMP 2,1

Code	OSS00035W
ID Tag	Rb324-200308-WS
Unit size	100 ul
Immunogen	A synthetic peptide from aa region 10-60 of human VAMP2 conjugated to blue carrier protein was used as the antigen. The VAMP2 peptide shares 93% shared identity with VAMP1. The peptide is homologous in many other species including rat, mouse and xenopus.
Conjugate	Unconjugated antibody
Also known	VAMP-2, Synaptobrevin-2, VAMP2, SYB2. VAMP1, Synaptobrevin-1
Host	NZ white rabbit
Purity	Whole serum
Clonality	Polyclonal
Isotype	Polyclonal, whole serum
Applications	IHC, WB. A dilution of 1 : 1000 is recommended. The optimal dilution should be determined by the end user. Not yet tested in other applications.
Specificity	Specific for VAMP2 and VAMP1.
Spcs X-react.	Human, rat, mouse, marmoset. Other species not yet tested.
Format	Lyophilised
Reconstitution	Reconstitute in 100 ul of sterile water. Centrifuge to remove any insoluble material.
Storage	Maintain the lyophilised/reconstituted antibodies frozen at -20C for long term storage and refrigerated at 2-8C for a shorter term. When reconstituting, glycerol (1:1) may be added for an additional stability. Avoid freeze and thaw cycles.
Expiry Date	12 months after reconstitution
Shipping	This item will be shipped to you at ambient temperature in a lyophilised form.
Limitation	For research use only



IF on 1 day- old mouse cortical cell culture using Rabbit antibody to VAMP 2, 1 (OSS00035W) at 1: 1000 dilution. DAPI counter stained.

Related Products

OSS00045G Rabbit antibody to VAMP 2,1 (10-60)