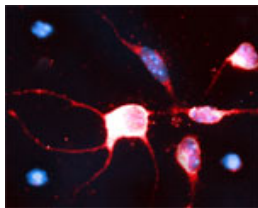


Rabbit antibody to RhoB

Code	OSR00267W
ID Tag	Rb323-200308-WS
Unit size	100 µl
Immunogen	A synthetic peptide from human Rho-related GTP-binding protein RhoB conjugated to blue carrier protein was used as the antigen. The peptide is homologous in mouse and rat.
Conjugate	Unconjugated antibody
Also known	H6, ARH6, ARHB, RHOH6
Host	NZ white rabbit
Purity	Whole serum
Clonality	Polyclonal
Isotype	Polyclonal, whole serum
Applications	IHC, WB. A dilution of 1 : 300 to 1 : 2000 is recommended. The optimal dilution should be determined by the end user.
Specificity	Specific for RhOB.
Spcs X-react.	Human, rat, mouse. Other species not yet tested.
Format	Lyophilised
Reconstitution	Reconstitute in 100 µl of sterile water. Centrifuge to remove any insoluble material.
Storage	Maintain the lyophilised/reconstituted antibodies frozen at -20°C for long term storage and refrigerated at 2-8°C for a shorter term. When reconstituting, glycerol (1:1) may be added for an additional stability. Avoid freeze and thaw cycles.
Expiry Date	12 months after reconstitution
Shipping	This item will be shipped to you at ambient temperature in a lyophilised form.
Limitation	For research use only



IF on 1 day- old mouse cortical cell culture using Rabbit antibody to RhoB (OSR00267W) at 1: 2000 dilution. DAPI counter stained.

Related Products

OSR00301G	Rabbit antibody to RhoB
OSR00303G	Sheep antibody to RhoB
OSR00302W	Sheep antibody to RhoB