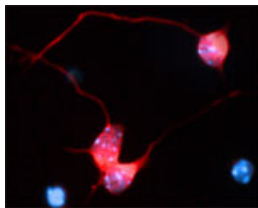


Rabbit antibody to Rabphilin-3A

Code	OSR00265W
ID Tag	Rb319-200308-WS
Unit size	100 µl
Immunogen	A synthetic peptide from mouse Rabphilin-3A (Exophilin-1, Rph3a) conjugated to an immunogenic carrier protein was used as the antigen.
Conjugate	Unconjugated antibody
Also known	Exophilin-1, Rph3a, rabphilin 3A homolog
Host	NZ white rabbit
Purity	Whole serum
Clonality	Polyclonal
Isotype	Polyclonal, whole serum
Applications	IHC, WB. A dilution of 1 : 300 to 1 : 2000 is recommended. The optimal dilution should be determined by the end user. Not yet tested in other applications.
Specificity	Specific for Rabphilin-3A.
Spcs X-react.	Rat, mouse. Other species not yet tested but expected to work in human as well.
Format	Lyophilised
Reconstitution	Reconstitute in 100 µl of sterile water. Centrifuge to remove any insoluble material.
Storage	Maintain the lyophilised/reconstituted antibodies frozen at -20°C for long term storage and refrigerated at 2-8°C for a shorter term. When reconstituting, glycerol (1:1) may be added for an additional stability. Avoid freeze and thaw cycles.
Expiry Date	12 months after reconstitution
Shipping	This item will be shipped to you at ambient temperature in a lyophilised form.
Limitation	For research use only



IF on 1 day- old mouse cortical cell culture using Rabbit antibody to Rabphilin-3A (Exophilin-1, Rph3a): whole serum (OSR00265W) at 1: 2000 dilution. DAPI counter stained.