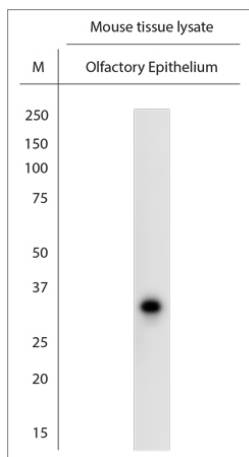


Rabbit antibody to Olfr24

Code	OSR00260W
ID Tag	Rb369-200308-WS
Unit size	100 µl
Immunogen	A synthetic peptide from c-terminal region of mouse olfactory receptor family 132, subfamily 1 (MOR132-1) conjugated to blue carrier protein was used as the antigen.
Conjugate	Unconjugated antibody
Also known	Olfactory receptor MOR132-1, olfactory receptor 24, olfactory receptor Olfr24, Olfr24, MTPCR51
Host	NZ white rabbit
Purity	Whole serum
Clonality	Polyclonal
Isotype	Polyclonal, whole serum
Applications	IHC, WB. A dilution of 1: 2000 is recommended for WB and 1:1000 for IHC-P. The optimal dilution should be determined by the end user.
Specificity	Specific for MOR132-1.
Spcs X-react.	Mouse. Other species not yet tested.
Format	Lyophilised
Reconstitution	Reconstitute in 100 µl of sterile water. Centrifuge to remove any insoluble material.
Storage	Maintain the lyophilised/reconstituted antibodies frozen at -20°C for long term storage and refrigerated at 2-8°C for a shorter term. When reconstituting, glycerol (1:1) may be added for an additional stability. Avoid freeze and thaw cycles.
Expiry Date	12 months after reconstitution
Shipping	This item will be shipped to you at ambient temperature in a lyophilised form.
Limitation	For research use only



WB on mouse tissue lysate. Blocking: 1% LFDM for 30 min at RT; primary antibody: dilution 1:2000 incubated at 4C overnight. Click on eLAB BOOK tab to see the details.