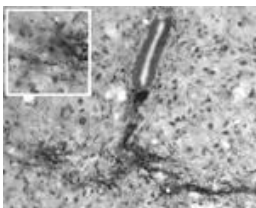


Rabbit antibody to phospho S41GAP 43

Code	OSG00010W
ID Tag	Rb654-060908-WS
Unit size	100 ul
Immunogen	A synthetic peptide to phospho S41 of human Axonal membrane protein GAP-43 conjugated to blue carrier protein was used as the antigen. The antigen is homologous in many species including rat, mouse and zebrafish.
Conjugate	Unconjugated antibody
Also known	Neuromodulin, growth-associated protein 43, protein F1, Basp2, B-50
Host	NZ white rabbit
Purity	Whole serum
Clonality	Polyclonal
Isotype	Polyclonal, whole serum
Applications	IHC. A dilution of 1 : 300 to 1 : 2000 is recommended. The optimal dilution should be determined by the end user. Not yet tested in other applications.
Specificity	Specific for GAP-43.
Spcs X-react.	Human, rat, mouse. Other species not yet tested.
Format	Lyophilised
Reconstitution	Reconstitute in 100 ul of sterile water. Centrifuge to remove any insoluble material.
Storage	Maintain the lyophilised/reconstituted antibodies frozen at -20C for long term storage and refrigerated at 2-8C for a shorter term. When reconstituting, glycerol (1:1) may be added for an additional stability. Avoid freeze and thaw cycles.
Expiry Date	12 months after reconstitution
Shipping	This item will be shipped to you at ambient temperature in a lyophilised form.
Limitation	For research use only



IHC on rat spinal cord (central canal) using Rabbit antibody to phospho S41GAP 43 at 1 : 1000 dilution. Pre-absorption of the antibody with the immunising peptide completely abolishes the immunostaining (not shown).

Related Products

OSG00011G Rabbit antibody to phospho S41 GAP 43
