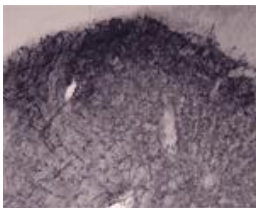


Rabbit antibody to Syntaxin 7

Code	OSS00012W
ID Tag	Rb307-200308-WS
Unit size	100 µl
Immunogen	A synthetic peptide from n-terminal region of mouse Syntaxin-7 (STX7, Syn7, Syntaxin 7) conjugated to an immunogenic carrier protein was used as the antigen.
Conjugate	Unconjugated antibody
Also known	Syntaxin-7, STX7, Syn7
Host	NZ white rabbit
Purity	Whole serum
Clonality	Polyclonal
Isotype	Polyclonal, whole serum
Applications	IHC, WB. A dilution of 1 : 300 to 1 : 2000 is recommended. The optimal dilution should be determined by the end user.
Specificity	Specific for Syntaxin-7.
Spcs X-react.	Rat, mouse. Other species not yet tested.
Format	Lyophilised
Reconstitution	Reconstitute in 100 µl of sterile water. Centrifuge to remove any insoluble material.
Storage	Maintain the lyophilised/reconstituted antibodies frozen at -20°C for long term storage and refrigerated at 2-8°C for a shorter term. When reconstituting, glycerol (1:1) may be added for an additional stability. Avoid freeze and thaw cycles.
Expiry Date	12 months after reconstitution
Shipping	This item will be shipped to you at ambient temperature in a lyophilised form.
Limitation	For research use only



IHC on rat spinal cord (dorsal horn) using Rabbit antibody to n-terminal region of Syntaxin-7 (STX7, Syn7, Syntaxin 7): whole serum (OSS00012W) at 1 : 1000 dilution. Pre-absorption of the antibody with the immunising peptide completely abolishes the immunostaining (not shown).