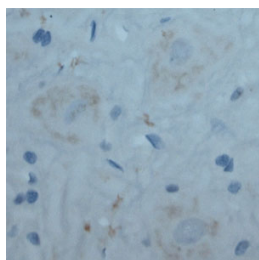


Rabbit antibody to Contactin 2 (550-600)

Code	OSC00012W
ID Tag	Rb2099-230713-WS
Unit size	100 µl
Immunogen	A synthetic peptide from aa region 550-600 of rat Contactin 2 conjugated to blue carrier protein was used as the antigen. The peptide is homologous in mouse.
Conjugate	Unconjugated antibody
Also known	Axonin-1, Axonal glycoprotein TAG-1, Transient axonal glycoprotein 1, TAX-1, CNTN2, AXT, TAG1, TAX1
Host	NZ white rabbit
Purity	Whole serum
Clonality	Polyclonal
Isotype	Polyclonal, whole serum
Applications	IHC, WB. A dilution of 1 : 300 to 1 : 2000 is recommended. The optimal dilution should be determined by the end user. Not yet tested in other applications.
Specificity	Specific for contactin-2.
Spcs X-react.	Rat, mouse. Other species not yet tested.
Format	Lyophilised
Reconstitution	Reconstitute in 100 µl of sterile water. Centrifuge to remove any insoluble material.
Storage	Maintain the lyophilised/reconstituted antibodies frozen at -20°C for long term storage and refrigerated at 2-8°C for a shorter term. When reconstituting, glycerol (1:1) may be added for an additional stability. Avoid freeze and thaw cycles.
Expiry Date	12 months after reconstitution
Shipping	This item will be shipped to you at ambient temperature in a lyophilised form.
Limitation	For research use only



IHC on rat spinal cord (paraffin section) using Rabbit antibody to Contactin 2 (OSC00012W) at 1 : 200 dilution incubated overnight at 4C, developed with DAB/Ni and counterstained with hematoxylin.