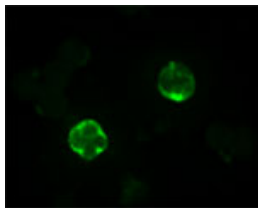


Rabbit antibody to BEX1 (15-60)

Code	OSB00005W
ID Tag	Rb414-200308-WS
Unit size	100 µl
Immunogen	A synthetic peptide from aa region 15-60 of human BEX1 conjugated to blue carrier protein was used as the antigen.
Conjugate	Unconjugated antibody
Also known	BEX1, BEX2, HBEX2, HGR74-h
Host	NZ white rabbit
Purity	Whole serum
Clonality	Polyclonal
Isotype	Polyclonal, whole serum
Applications	IHC, WB. A dilution of 1 : 200 to 1 : 2000 is recommended. The optimal dilution should be determined by the end user. Not yet tested in other applications.
Specificity	Specific for BEX1 (BEX2).
Spcs X-react.	Human. Other species not yet tested.
Format	Lyophilised
Reconstitution	Reconstitute in 100 µl of sterile water. Centrifuge to remove any insoluble material.
Storage	Maintain the lyophilised/reconstituted antibodies frozen at -20°C for long term storage and refrigerated at 2-8°C for a shorter term. When reconstituting, glycerol (1:1) may be added for an additional stability. Avoid freeze and thaw cycles.
Expiry Date	12 months after reconstitution
Shipping	This item will be shipped to you at ambient temperature in a lyophilised form.
Limitation	For research use only



IF on human whole blood (cytospin prep) using Rabbit antibody to BEX1 (OSB00005W) at 1: 200 dilution.

Related Products

OSB00008W Rabbit antibody to BEX1 (2-40)