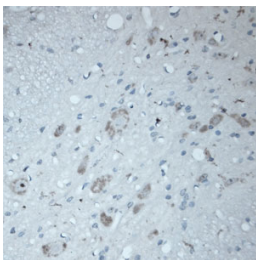


Rabbit antibody to ATG16L1

Code	OSA00045W
ID Tag	Rb275-270108-WS
Unit size	150 µl
Immunogen	A synthetic peptide from human ATG16L1 conjugated to blue carrier protein has been used as the antigen. The peptide is homologous in mouse and rat.
Conjugate	Unconjugated antibody
Also known	ATG16L1, APG16L, IBD10, WDR30, APG16L, ATG16L, FLJ00045, FLJ10035, FLJ10828, FLJ22677
Host	NZ white rabbit
Purity	Whole serum
Clonality	Polyclonal
Isotype	Polyclonal, whole serum
Applications	IHC, WB. Use at a dilution of 1 : 100 to 1 : 2000. The optimal dilution should be determined by the end user.
Specificity	Specific for ATG16L1.
Spcs X-react.	Human. Other species not yet tested.
Format	Lyophilised
Reconstitution	Reconstitute in 150 µl of sterile water. Centrifuge to remove any insoluble material.
Storage	Maintain the lyophilised/reconstituted antibodies frozen at -20°C for long term storage and refrigerated at 2-8°C for a shorter term. When reconstituting, glycerol (1:1) may be added for an additional stability. Avoid freeze and thaw cycles.
Expiry Date	12 months after reconstitution
Shipping	This item will be shipped to you at ambient temperature in a lyophilised form.
Limitation	For research use only



IHC on rat spinal cord (paraffin section) using Rabbit antibody to autophagy-related protein 16-1 (ATG16L1, APG16L) isoforms 1, 2, 3: whole serum (OSA00045W) at 1 : 200 dilution incubated overnight at 4C, developed with DAB/No and counterstained with hematoxylin.

Related Products

OSA00046W Sheep antibody to ATG16L1