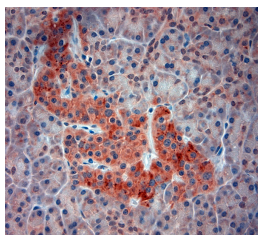


Rabbit antibody to ATG4D (10-50)

Code	OSA00032W
ID Tag	Rb269-270108-WS
Unit size	150 µl
Immunogen	A synthetic peptide from aa region 10-50 of human ATG4D conjugated to blue carrier protein has been used as the antigen.
Conjugate	Unconjugated antibody
Also known	Cysteine protease ATG4D, Autophagy-related protein 4 homolog D Autophagin-4, Autophagy-related cysteine endopeptidase 4, AUT-like 4 cysteine endopeptidase, APG4D, AUTL4, ATG4D This gene encodes a member of the autophagin protein family.
Host	NZ white rabbit
Purity	Whole serum
Clonality	Polyclonal
Isotype	Polyclonal, whole serum
Applications	IHC, WB. Use at a dilution of 1 : 1500 to 1 : 3000. The optimal dilution should be determined by the end user.
Specificity	Specific for ATG4D.
Spcs X-react.	Human. Other species not yet tested.
Format	Lyophilised
Reconstitution	Reconstitute in 150 µl of sterile water. Centrifuge to remove any insoluble material.
Storage	Maintain the lyophilised/reconstituted antibodies frozen at -20°C for long term storage and refrigerated at 2-8°C for a shorter term. When reconstituting, glycerol (1:1) may be added for an additional stability. Avoid freeze and thaw cycles.
Expiry Date	12 months after reconstitution
Shipping	This item will be shipped to you at ambient temperature in a lyophilised form.
Limitation	For research use only



IHC-P on paraffin sections of human pancreas.
 HIER: Tris-EDTA, pH 9 for 20 min using Thermo PT Module.
 Blocking: 0.2% LFDM in TBST filtered thru 0.2 µm.
 Detection was done using Novolink HRP polymer from Leica following manufacturers instructions.
 Primary antibody: dilution 1: 2000, incubated 30 min at RT using Autostainer.
 Sections were counterstained with Harris Hematoxylin.

Related Products

OSA00031W	Rabbit antibody to ATG4D
OSA00035W	Rabbit antibody to ATG4D
OSA00036W	Sheep antibody to ATG4D
OSA00037W	Sheep antibody to ATG4D