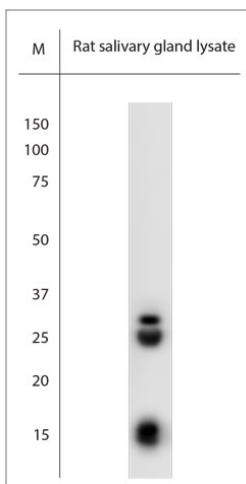


Rabbit antibody to native NGF

Code	OSN00001W
ID Tag	Rb296-230208-WS
Unit size	150 ul
Immunogen	Native beta-nerve growth factor (Ngfb, beta-NGF) purified from mouse submandibular gland
Conjugate	Unconjugated antibody
Also known	Ngfb, beta-NGF
Host	NZ white rabbit
Purity	Whole serum
Clonality	Polyclonal
Isotype	Polyclonal, whole serum
Applications	IHC, WB, inhibition of biological activity. Tested in vitro, this antibody abolishes the neuronal survival and the outgrowth actions of murine NGF in chicken DRG. A dilution of 1 : 2000 is recommended for WB and IHC-P; for inhibition of biological activities a dilution of up to 1 : 100 is recommended and for in vivo 1-20 ul per gram body weight. The optimal dilution should be determined by the end user.
Specificity	Specific for NGF
Spcs X-react.	Mouse, rat and human. Other species not yet tested.
Format	Lyophilised
Reconstitution	Reconstitute in 150 ul of sterile water. Centrifuge to remove any insoluble material.
Storage	Maintain the lyophilised/reconstituted antibodies frozen at -20C for long term storage and refrigerated at 2-8C for a shorter term. When reconstituting, glycerol (1:1) may be added for an additional stability. Avoid freeze and thaw cycles.
Expiry Date	12 months after reconstitution
Shipping	This item will be shipped to you at ambient temperature in a lyophilised form.
Limitation	For research use only



WB on rat salivary gland lysate. Blocking: 1% LFDM for 30 min at RT; primary antibody: dilution 1:1000 incubated at 4C overnight. Click on eLAB BOOK tab to see the details.