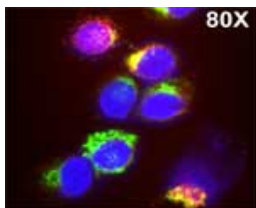


Rabbit antibody to MPO

Code	DOM00001G
ID Tag	Rb2141-040913-G
Unit size	500 ug
Immunogen	Native myeloperoxidase isolated from human leucocytes
Conjugate	Unconjugated antibody
Also known	Myeloperoxidase
Host	NZ white rabbit
Purity	Protein G purified IgG
Clonality	Polyclonal
Isotype	Polyclonal, IgG
Applications	IHC, WB. A working concentration of 10-50 ug/ml is recommended. The optimal dilution should be determined by the end user. This antibody performs superbly in paraffin-embedded tissue sections fixed in formalin, frozen sections and cell cytopins.
Specificity	Specific for MPO.
Spes X-react.	Human
Format	Lyophilised
Reconstitution	Reconstitute in 500 ul of sterile water. Centrifuge to remove any insoluble material.
Storage	Maintain the lyophilised/reconstituted antibodies frozen at -20C for long term storage and refrigerated at 2-8C for a shorter term. When reconstituting, glycerol (1:1) may be added for an additional stability. Avoid freeze and thaw cycles.
Expiry Date	12 months after reconstitution
Shipping	This item will be shipped to you at ambient temperature in a lyophilised form.
Limitation	For research use only



Isolated monocytes were stained with Lysotrack red followed by staining with Rabbit antibody to MPO (3ug/ml) for 1 hour at room temperature, washed and followed by staining with goat anti-rabbit antibody conjugated to Alexa 488 (Green) for 1 hr. Mounting media (10% Glycerol in PBS) containing Hoechst 33258 1 ug/ml (Sigma-Aldrich) was used for nuclear counterstaining (Blue). Fluorescent cell staining was analysed by confocal microscopy using a BioRad Radiance 2100 confocal microscope. Magnification: 80X

Related Products

OSM00129W	Rabbit antibody to MPO
OSM00098W	Rabbit antibody to proMPO