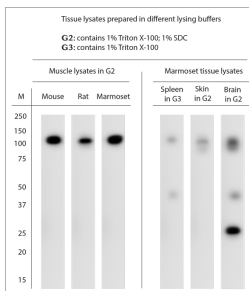


## Rabbit antibody to TRPV2

<b>Code</b>	OSR00190W
<b>ID Tag</b>	Rb136-281007-WS
<b>Unit size</b>	100 ul
<b>Immunogen</b>	A synthetic peptide from human TRPV2 conjugated to blue carrier protein was used as the antigen.
<b>Conjugate</b>	Unconjugated antibody
<b>Also known</b>	Transient receptor potential cation channel subfamily V member 2, TrpV2, osm-9-like TRP channel 2, OTRPC2, vanilloid receptor-like protein, VRL, VRL1, VRL-1
<b>Host</b>	NZ white rabbit
<b>Purity</b>	Whole serum
<b>Clonality</b>	Polyclonal
<b>Isotype</b>	Polyclonal, whole serum
<b>Applications</b>	IHC, WB. A dilution of 1 : 1000 is recommended for WB and 1: 2000 for IHC-P. The optimal dilution should be determined by the end user. Not yet tested in other applications.
<b>Specificity</b>	Specific for TRPV2.
<b>Spcs X-react.</b>	Human, marmoset, rat, mouse. Other species not yet tested.
<b>Format</b>	Lyophilised
<b>Reconstitution</b>	Reconstitute in 100 ul of sterile water. Centrifuge to remove any insoluble material.
<b>Storage</b>	Maintain the lyophilised/reconstituted antibodies frozen at -20Â°C for long term storage and refrigerated at 2-8Â°C for a shorter term. When reconstituting, glycerol (1:1) may be added for an additional stability. Avoid freeze and thaw cycles.
<b>Expiry Date</b>	12 months after reconstitution
<b>Shipping</b>	This item will be shipped to you at ambient temperature in a lyophilised form.
<b>Limitation</b>	For research use only



WB on tissue lysates. Blocking: 1% LFDM for 30 min at RT; primary antibody dilutions: in Muscle 1:1000; in Brain, Spleen, Skin: 1:1000 incubated at 4C overnight. Click on eLAB BOOK tab to see the details.