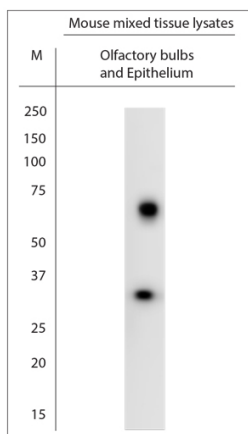


Rabbit antibody to Colon carcinoma laminin binding protein (50-100)

Code	OSR00144W
ID Tag	Rb234-251107-WS
Unit size	100 µl
Immunogen	A synthetic peptide aa region 50-100 of human 40S ribosomal protein SA conjugated to blue carrier protein was used as the antigen. The peptide is homologous in rat and mouse.
Conjugate	Unconjugated antibody
Also known	Immature laminin receptor, nonintegrin laminin receptor precursor, 40S ribosomal protein SA, p40, 34/67 kDa laminin receptor, Colon carcinoma laminin-binding protein, NEM/1CHD4, Multidrug resistance-associated protein MGr1-Ag, LAMBR, LAMR1, RPSA ribosomal protein SA, LRP, 67LR, 37LRP
Host	NZ white rabbit
Purity	Whole serum
Clonality	Polyclonal
Isotype	Polyclonal, whole serum
Applications	IHC, WB. A dilution of 1 : 3000 is recommended for WB and 1:1000 for OHC-P. The optimal dilution should be determined by the end user.
Specificity	Specific for 40S ribosomal protein SA
Spes X-react.	Rat, mouse, human. Other species not yet tested.
Format	Lyophilised
Reconstitution	Reconstitute in 100 µl of sterile water. Centrifuge to remove any insoluble material.
Storage	Maintain the lyophilised/reconstituted antibodies frozen at -20°C for long term storage and refrigerated at 2-8°C for a shorter term. When reconstituting, glycerol (1:1) may be added for an additional stability. Avoid freeze and thaw cycles.
Expiry Date	12 months after reconstitution
Shipping	This item will be shipped to you at ambient temperature in a lyophilised form.
Limitation	For research use only



WB on mouse tissue lysate. Blocking: 1% LFDM for 30 min at RT; primary antibody: dilution 1:3000 incubated at 4°C overnight. Click on eLAB BOOK tab to see the details.