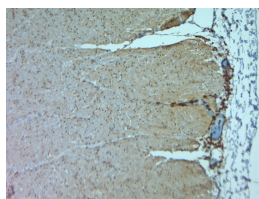


Rabbit antibody to TRPV5

Code	OSR00129W
ID Tag	Rb123-281007-WS
Unit size	100 µl
Immunogen	A synthetic peptide from the 4th cytoplasmic loop of human TRPV5 conjugated to an immunogenic carrier protein was used as the antigen.
Conjugate	Unconjugated antibody
Also known	TrpV5, osm-9-like TRP channel 3, OTRPC3, Epithelial calcium channel 1, ECaC, ECaC1, Calcium transport protein 2, CaT2, CAT2, ECAC1, OTRPC3, transient receptor potential cation channel subfamily V member 5
Host	NZ white rabbit
Purity	Whole serum
Clonality	Polyclonal
Isotype	Polyclonal, whole serum
Applications	IHC, WB. A dilution of 1 : 300 to 1 : 2000 is recommended. The optimal dilution should be determined by the end user. Not yet tested in other applications.
Specificity	Specific for TRPV5.
Spcs X-react.	Human. Other species not yet tested.
Format	Lyophilised
Reconstitution	Reconstitute in 100 µl of sterile water. Centrifuge to remove any insoluble material.
Storage	Maintain the lyophilised/reconstituted antibodies frozen at -20°C for long term storage and refrigerated at 2-8°C for a shorter term. When reconstituting, glycerol (1:1) may be added for an additional stability. Avoid freeze and thaw cycles.
Expiry Date	12 months after reconstitution
Shipping	This item will be shipped to you at ambient temperature in a lyophilised form.
Limitation	For research use only



```

/* Font Definitions */
@font-face
{font-family:Arial;
panose-1:2 11 6 4 2 2 2 2 2 4;
mso-font-charset:0;
mso-generic-font-family:auto;
mso-font-pitch:variable;
mso-font-signature:3 0 0 0 1 0;}
@font-face
{font-family:Cambria;
panose-1:2 4 5 3 5 4 6 3 2 4;
mso-font-charset:0;
mso-generic-font-family:auto;
mso-font-pitch:variable;
mso-font-signature:3 0 0 0 1 0;}

```

```

/* Style Definitions */
p.MsoNormal, li.MsoNormal, div.MsoNormal

```

Related Products

OST00048W Sheep antibody to TRPV5
(mso-style-parent: "");
margin-top:0cm;
margin-right:0cm;

Rabbit antibody to TRPV5

```
margin-bottom:10.0pt;
margin-left:0cm;
mso-pagination:widow-orphan;
font-size:12.0pt;
font-family:"Times New Roman";
mso-ascii-font-family:Arial;
mso-fareast-font-family:Cambria;
mso-fareast-theme-font:minor-latin;
mso-hansi-font-family:Arial;
mso-bidi-font-family:"Times New Roman";
mso-bidi-theme-font:minor-bidi;}
@page Section1
{size:612.0pt 792.0pt;
margin:72.0pt 90.0pt 72.0pt 90.0pt;
mso-header-margin:36.0pt;
mso-footer-margin:36.0pt;
mso-paper-source:0;}
div.Section1
{page:Section1;}
-->
```

IHC on paraffin sections of human large intestine tissue using Rabbit antibody to TRPV5: OSR00129W.

HIER: 1 mM EDTA, pH 8 for 20 min using Thermo PT Module.

Blocking: 0.2% LFDM in TBST filtered thru 0.2 µm.

Detection was done using Novolink HRP polymer from Leica following manufacturer's instructions.

Primary antibody: dilution 1: 1000, incubated 30 min at RT (using Autostainer).

Sections were counterstained with Harris Hematoxylin.

Related Products

OST00048W Sheep antibody to TRPV5