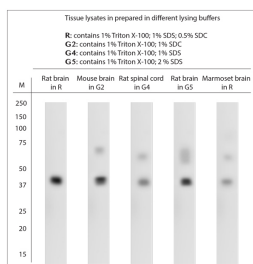


## Rabbit antibody to Pejvakin

<b>Code</b>	OSP00001W
<b>ID Tag</b>	Rb2902-231116-WS
<b>Unit size</b>	100 Åµl
<b>Immunogen</b>	A synthetic peptide from mouse Pejvakin conjugated to blue carrier protein was used as the antigen. The peptide is homologous in rat.
<b>Conjugate</b>	Unconjugated antibody
<b>Also known</b>	Autosomal recessive deafness type 59 protein, PJVK, DFNB59, DFNB59 deafness, autosomal recessive 59
<b>Host</b>	NZ white rabbit
<b>Purity</b>	Whole serum
<b>Clonality</b>	Polyclonal
<b>Isotype</b>	Polyclonal, whole serum
<b>Applications</b>	IHC, WB. A dilution of 1 : 1000 is recommended. The optimal dilution should be determined by the end user. Not yet tested in other applications.
<b>Specificity</b>	Specific for Pejvakin.
<b>Spes X-react.</b>	Rat, mouse, marmoset. Other species not yet tested.
<b>Format</b>	Lyophilised
<b>Reconstitution</b>	Reconstitute in 100 Åµl of sterile water. Centrifuge to remove any insoluble material.
<b>Storage</b>	Maintain the lyophilised/reconstituted antibodies frozen at -20Å°C for long term storage and refrigerated at 2-8Å°C for a shorter term. When reconstituting, glycerol (1:1) may be added for an additional stability. Avoid freeze and thaw cycles.
<b>Expiry Date</b>	12 months after reconstitution
<b>Shipping</b>	This item will be shipped to you at ambient temperature in a lyophilised form.
<b>Limitation</b>	For research use only



WB on tissue lysates. Note the profound effect of the lysing buffer on WB. Blocking: 1% LFDM for 30 min at RT; primary antibody: dilution 1:1000 incubated overnight at 4C. Click on eLAB BOOK tab to see the details.