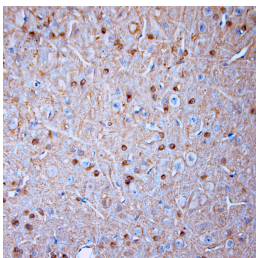


Guinea pig antibody to Tau

Code	OST00478W
ID Tag	Gp77-310519-WS
Unit size	100 Åµl
Immunogen	A synthetic peptide human Tau conjugated to blue carrier protein was used as the antigen. The peptide is homologous in rat and mouse.
Conjugate	Unconjugated antibody
Also known	Microtubule-associated protein tau, Neurofibrillary tangle protein, Paired helical filament-tau, PHF-tau, MAPT, MAPTL, MTBT1
Host	Guinea pig
Purity	Whole serum
Clonality	Polyclonal
Isotype	Polyclonal, whole serum
Applications	IHC, WB. A dilution of 1 : 500 is recommended for WB and IHC-P. The optimal dilution should be determined by the end user. Not yet tested in other applications.
Specificity	Specific for Tau.
Spcs X-react.	Human, rat, mouse, marmoset. Other species not yet tested.
Format	Lyophilised
Reconstitution	Reconstitute in 100 Åµl of sterile water. Centrifuge to remove any insoluble material.
Storage	Maintain the lyophilised/reconstituted antibodies frozen at -20C for long term storage and refrigerated at 2-8C for a shorter term. When reconstituting, glycerol (1:1) may be added for an additional stability. Avoid freeze and thaw cycles.
Expiry Date	12 months after reconstitution
Shipping	This item will be shipped to you at ambient temperature in a lyophilised form.
Limitation	For research use only



IHC-P on paraffin sections of rat brain.

The animal was perfused using Autoperfuser at a pressure of 130 mmHg with 300 ml 4% FA before being processed for paraffin embedding. HIER: Tris-EDTA, pH 9 for 20 min using Thermo PT Module.

Blocking: 0.2% LFD in TBST filtered thru 0.2 Åµm.

Detection was done using Novolink HRP polymer from Leica following manufacturers instructions; DAB chromogen: Candela DAB chromogen from Osenses.

Primary antibody: dilution 1: 1000, incubated 30 min at RT using Autostainer.

Sections were counterstained with Harris Hematoxylin.

Related Products

OST00329W Rabbit antibody to Tau (640-680)