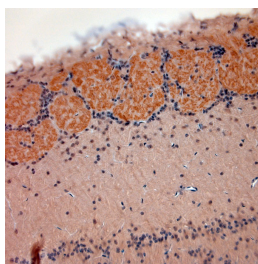


Guinea pig antibody to VGLUT2

Code	OSV00108W
ID Tag	Gp120-111119-WS
Unit size	100 ul
Immunogen	A synthetic peptide from mouse VGLUT2 conjugated to blue carrier protein was used as the antigen. The peptide is homologous in rat.
Conjugate	Unconjugated antibody
Also known	Vesicular glutamate transporter 2, VGLUT2, Solute carrier family 17 member 6, Differentiation-associated Na(+)-dependent inorganic phosphate cotransporter, Differentiation-associated BNPI, Slc17a6, Dnpi
Host	Guinea pig
Purity	Whole serum
Clonality	Polyclonal
Isotype	Polyclonal, whole serum
Applications	IHC, WB. A dilution of 1: 500 is recommended. The optimal dilution should be determined by the end user. Not yet tested in other applications.
Specificity	Specific for VGLUT2.
Spcs X-react.	Rat, mouse, marmoset. Other species not yet tested.
Format	Lyophilised
Reconstitution	Reconstitute in 100 ul of sterile water. Centrifuge to remove any insoluble material.
Storage	Maintain the lyophilised/reconstituted antibodies frozen at -20C for long term storage and refrigerated at 2-8C for a shorter term. When reconstituting, glycerol (1:1) may be added for an additional stability. Avoid freeze and thaw cycles.
Expiry Date	12 months after reconstitution
Shipping	This item will be shipped to you at ambient temperature in a lyophilised form.
Limitation	For research use only



IHC-P on paraffin sections of mouse olfactory bulbs.
The animal was perfused using Autoperfuser at a pressure of 130 mmHg with 200 ml 4% FA before being processed for paraffin embedding. HIER: Tris-EDTA, pH 9 for 20 min using Thermo PT Module.
Blocking: 0.2% LFDM in TBST filtered thru 0.2 µm.
Detection was done using Osenses' Rabbit anti Gp adaptobody at 1:3000 dilution and then Novolink HRP polymer from Leica following manufacturers instructions; DAB chromogen: Candela DAB chromogen from Osenses.
Primary antibody: dilution 1: 500, incubated 30 min at RT using Autostainer.
Sections were counterstained with Harris Hematoxylin.

Related Products

OSV00087W Rabbit antibody to VGLUT2