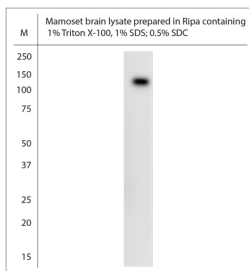


Rabbit antibody to XPO6

Code	OSX00001W
ID Tag	Rb2650-240815-WS
Unit size	100 µl
Immunogen	A synthetic peptide from human XPO6 conjugated to blue carrier protein was used as the antigen. The peptide is homologous in marmoset.
Conjugate	Unconjugated antibody
Also known	Exportin-6, Exportin 6, Exp6, Ran binding protein 20
Host	NZ white rabbit
Purity	Whole serum
Clonality	Polyclonal
Isotype	Polyclonal, whole serum
Applications	IHC, WB. A dilution of 1:1000 to 1:2000 is recommended. The optimal dilution should be determined by the end user. Not yet tested in other applications.
Specificity	Specific for XPO6
Spcs X-react.	Marmoset, human. Other species not yet tested.
Format	Lyophilised
Reconstitution	Reconstitute in 100 µl of sterile water. Centrifuge to remove any insoluble material.
Storage	Maintain the lyophilised/reconstituted antibodies frozen at -20°C for long term storage and refrigerated at 2-8°C for a shorter term. When reconstituting, glycerol (1:1) may be added for an additional stability. Avoid freeze and thaw cycles.
Expiry Date	12 months after reconstitution
Shipping	This item will be shipped to you at ambient temperature in a lyophilised form.
Limitation	For research use only



WB on marmoset brain lysate. Blocking: 1% LFDM for 30 min at RT; primary antibody: dilution 1:1500 incubated at 4°C overnight. Click on [eLAB BOOK](#) tab to see the details.