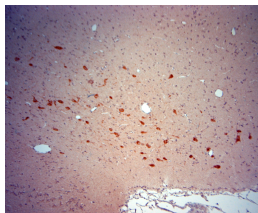


Rabbit antibody to ChAT

Code	OSC00326W
ID Tag	Rb2853-090916-WS
Unit size	100 ul
Immunogen	A synthetic peptide from mouse ChAT conjugated to blue carrier protein was used as the antigen. The peptide is homologous in rat and human.
Conjugate	Unconjugated antibody
Also known	CHOACTase, choline acetylase, choline O-acetyltransferase, CMS1A, CMS1A2
Host	NZ white rabbit
Purity	Whole serum
Clonality	Polyclonal
Isotype	Polyclonal, whole serum
Applications	IHC, WB. A dilution of 1: 250 is recommended for IHC-P and 1:500 for WB. The optimal dilution should be determined by the end user.
Specificity	Specific for ChAT.
Spcs X-react.	Rat, mouse, marmoset, human. Other species not yet tested.
Format	Lyophilised
Reconstitution	Reconstitute in 100 ul of sterile water. Centrifuge to remove any insoluble material.
Storage	Maintain the lyophilised/reconstituted antibodies frozen at -20C for long term storage and refrigerated at 2-8C for a shorter term. When reconstituting, glycerol (1:1) may be added for an additional stability. Avoid freeze and thaw cycles.
Expiry Date	12 months after reconstitution
Shipping	This item will be shipped to you at ambient temperature in a lyophilised form.
Limitation	For research use only



IHC-P on paraffin sections of rat brain.

The animal was perfused using Autoperfuser at a pressure of 130 mmHg with 300 ml 4% FA being processed for paraffin embedding. HIER: Tris-EDTA, pH 9 for 20 min using Thermo PT Module.

Blocking: 0.2% LFDM in TBST filtered thru 0.2 µm.

Detection was done using Novolink HRP polymer from Leica following manufacturers instructions; DAB chromogen: Candela DAB chromogen from Osenses.

Primary antibody: dilution 1: 250, incubated 30 min at RT using Autostainer.

Sections were counterstained with Harris Hematoxylin.

Related Products

OSC00334W	Guinea pig antibody to ChAT
OSC00335W	Guinea pig antibody to mouse ChAT