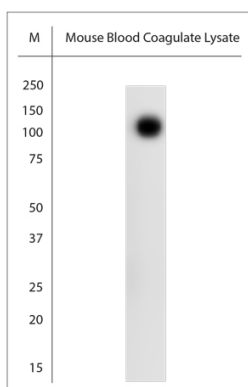


## Rabbit antibody to mouse SLC4A1

<b>Code</b>	OSB00090W
<b>ID Tag</b>	Rb2510-140415-WS
<b>Unit size</b>	100 µl
<b>Immunogen</b>	A synthetic peptide from mouse Band 3 anion transport protein (SLC4A1, CD233) conjugated to blue carrier protein was used as the antigen.
<b>Conjugate</b>	Unconjugated antibody
<b>Also known</b>	Anion exchange protein 1, AE 1, Anion exchanger 1, Solute carrier family 4 member 1, CD233, SLC4A1, AE1, DI, EPB3
<b>Host</b>	NZ white rabbit
<b>Purity</b>	Whole serum
<b>Clonality</b>	Polyclonal
<b>Isotype</b>	Polyclonal, whole serum
<b>Applications</b>	IHC, WB. A dilution of 1: 3000 is recommended for WB and 1:1000 for IHC-P. The optimal dilution should be determined by the end user. Not yet tested in other applications.
<b>Specificity</b>	Specific for SLC4A1.
<b>Spcs X-react.</b>	Mouse. Other species not yet tested.
<b>Format</b>	Lyophilised
<b>Reconstitution</b>	Reconstitute in 100 µl of sterile water. Centrifuge to remove any insoluble material.
<b>Storage</b>	Maintain the lyophilised/reconstituted antibodies frozen at -20°C for long term storage and refrigerated at 2-8°C for a shorter term. When reconstituting, glycerol (1:1) may be added for an additional stability. Avoid freeze and thaw cycles.
<b>Expiry Date</b>	12 months after reconstitution
<b>Shipping</b>	This item will be shipped to you at ambient temperature in a lyophilised form.
<b>Limitation</b>	For research use only



WB on mouse blood coagulate lysate. Blocking: 1% LFDM for 30 min at RT; primary antibody: dilution 1:3000 incubated at 4C overnight. Click on [eLAB](#) [BOOK](#) tab to see the details.

### Related Products

OSS00285W Rabbit antibody to SLC4A1