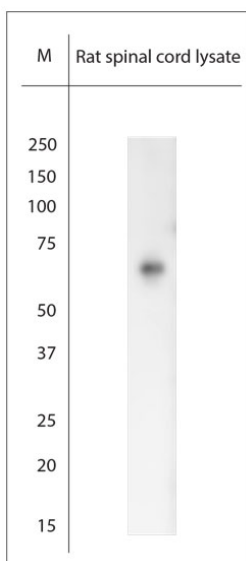


Rabbit antibody to RHOT1 (50-100)

Code	OSM00145W
ID Tag	Rb2537-230615-WS
Unit size	100 µl
Immunogen	A synthetic peptide from aa region 50-100 of human RHOT1 conjugated to blue carrier protein was used as the antigen. The peptide is homologous in rat and mouse.
Conjugate	Unconjugated antibody
Also known	Mitochondrial Rho GTPase 1, MIRO-1, Rac-GTP-binding protein-like protein, Ras homolog gene family member T1, ARHT1, MIRO1, MIRO 1
Host	NZ white rabbit
Purity	Whole serum
Clonality	Polyclonal
Isotype	Polyclonal, whole serum
Applications	IHC, WB. A dilution of 1 : 1000 to 1 : 2000 is recommended. The optimal dilution should be determined by the end user. Not yet tested in other applications.
Specificity	Specific for RHOT1.
Spcs X-react.	Human, mouse, rat. Other species not yet tested.
Format	Lyophilised
Reconstitution	Reconstitute in 100 µl of sterile water. Centrifuge to remove any insoluble material.
Storage	Maintain the lyophilised/reconstituted antibodies frozen at -20°C for long term storage and refrigerated at 2-8°C for a shorter term. When reconstituting, glycerol (1:1) may be added for an additional stability. Avoid freeze and thaw cycles.
Expiry Date	12 months after reconstitution
Shipping	This item will be shipped to you at ambient temperature in a lyophilised form.
Limitation	For research use only



WB on rat spinal cord lysate. Blocking with 0.5% LFDM for 30 min at RT; Primary antibody used at 1:1000 dilution incubated overnight at 4°C. Click on eLAB BOOK tab to see the details.