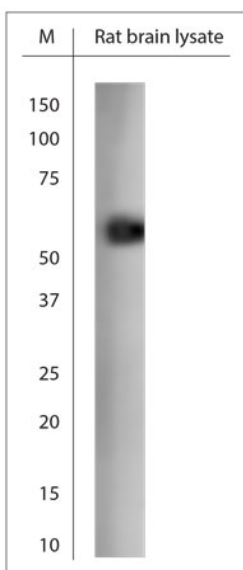


Rabbit antibody to Miro1 (400-450)

Code	OSR00391W
ID Tag	Rb2451-081014-WS
Unit size	100 ul
Immunogen	A synthetic peptide from aa region 400-450 of human MIRO1 conjugated to blue carrier protein was used as the antigen. The peptide is homologous in rat and mouse.
Conjugate	Unconjugated antibody
Also known	RHOT1 , Mitochondrial Rho GTPase 1, MIRO-1, Rac-GTP-binding protein-like protein, Ras homolog gene family member T1, ARHT1, MIRO 1
Host	NZ white rabbit
Purity	Whole serum
Clonality	Polyclonal
Isotype	Polyclonal, whole serum
Applications	IHC, WB. A dilution of 1 : 300 to 1 : 2000 is recommended. The optimal dilution should be determined by the end user. Not yet tested in other applications.
Specificity	Specific for MIRO1.
Spcs X-react.	Human, mouse, rat. Other species not yet tested.
Format	Lyophilised
Reconstitution	Reconstitute in 100 ul of sterile water. Centrifuge to remove any insoluble material.
Storage	Maintain the lyophilised/reconstituted antibodies frozen at -20C for long term storage and refrigerated at 2-8C for a shorter term. When reconstituting, glycerol (1:1) may be added for an additional stability. Avoid freeze and thaw cycles.
Expiry Date	12 months after reconstitution
Shipping	This item will be shipped to you at ambient temperature in a lyophilised form.
Limitation	For research use only



WB on rat brain lysate using Rabbit antibody to MIRO1 (400-450) (OSR00391W) at 1:500 dilution. Incubated 30 min at RT with shake.
Blocking: 0.5% LFDM in 1x PBS containing 0.1% Tween-20