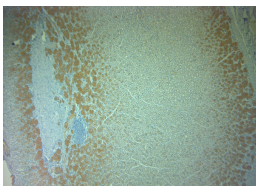


Rabbit antibody to Pallidin (50-100)

Code	OSP00188W
ID Tag	Rb2450-081014-WS
Unit size	100 ul
Immunogen	A synthetic peptide from human Pallidin conjugated to blue carrier protein was used as the antigen. The peptide shares 95% identity with rat and mouse sequences.
Conjugate	Unconjugated antibody
Also known	BLOC1S6, Pallidin, Syntaxin 13-interacting protein, Biogenesis of lysosome related organelles complex 1 subunit 6
Host	NZ white rabbit
Purity	Whole serum
Clonality	Polyclonal
Isotype	Polyclonal, whole serum
Applications	IHC, WB. A dilution of 1 : 100 to 1 : 2000 is recommended. The optimal dilution should be determined by the end user.
Specificity	Specific for Pallidin.
Spcs X-react.	Human, mouse. Other species not yet tested but expected to work in rat.
Format	Lyophilised
Reconstitution	Reconstitute in 100 ul of sterile water. Centrifuge to remove any insoluble material.
Storage	Maintain the lyophilised/reconstituted antibodies frozen at -20C for long term storage and refrigerated at 2-8C for a shorter term. When reconstituting, glycerol (1:1) may be added for an additional stability. Avoid freeze and thaw cycles.
Expiry Date	12 months after reconstitution
Shipping	This item will be shipped to you at ambient temperature in a lyophilised form.
Limitation	For research use only



IHC-P on paraffin sections of human stomach. HIER: Tris-EDTA, pH 9 for 20 min using Thermo PT Module. Blocking: 0.2% LFDM in TBST filtered thru 0.2 µm. Detection was done using Novolink HRP polymer from Leica following manufacturers instructions. Primary antibody: dilution 1: 1000, incubated 30 min at RT using Autostainer. Sections were counterstained with Harris Hematoxylin.