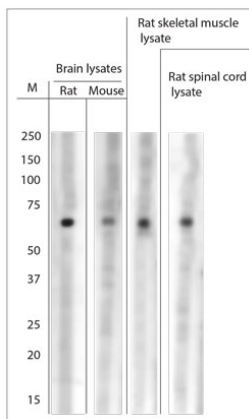


Rabbit antibody to ASIC1 (460-505)

| | |
|-----------------------|---|
| Code | OSA00270W |
| ID Tag | Rb2299-150114-WS |
| Unit size | 100 µl |
| Immunogen | A synthetic peptide from aa region 460-505 of human ASIC1 conjugated to blue carrier protein was used as the antigen. The peptide is homologous in rat and mouse. |
| Conjugate | Unconjugated antibody |
| Also known | Acid-sensing ion channel 1, ASIC1, Brain sodium channel 2, BNaC2, ACCN2 |
| Host | NZ white rabbit |
| Purity | Whole serum |
| Clonality | Polyclonal |
| Isotype | Polyclonal, whole serum |
| Applications | IHC, WB. A dilution of 1 : 1000 to 1 : 2000 is recommended. The optimal dilution should be determined by the end user. Not yet tested in other applications. |
| Specificity | Specific for AISC1. |
| Spcs X-react. | Mouse, rat, human. Other species not yet tested. |
| Format | Lyophilised |
| Reconstitution | Reconstitute in 100 µl of sterile water. Centrifuge to remove any insoluble material. |
| Storage | Maintain the lyophilised/reconstituted antibodies frozen at -20°C for long term storage and refrigerated at 2-8°C for a shorter term. When reconstituting, glycerol (1:1) may be added for an additional stability. Avoid freeze and thaw cycles. |
| Expiry Date | 12 months after reconstitution |
| Shipping | This item will be shipped to you at ambient temperature in a lyophilised form. |
| Limitation | For research use only |



WB on rat/mouse tissue lysates. Blocking: 0.5% LFDM for one hour at RT, primary antibody dilution 1: 1000 incubated overnight at 4°C. Detection was done by C-Digit from Licore.