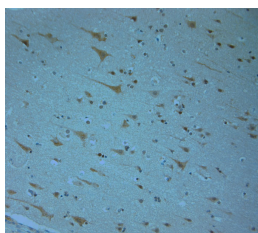


Rabbit antibody to KCNJ13 (2-50)

Code	OSK00069W
ID Tag	Rb2208-201113-WS
Unit size	100 µl
Immunogen	A synthetic peptide from aa region 2-50 of human KCNJ13 conjugated to blue carrier protein was used as the antigen. The peptide shares 95% identity with mouse and rat sequences.
Conjugate	Unconjugated antibody
Also known	Inward rectifier potassium channel 13, Potassium channel, inwardly rectifying subfamily J member 13, Inward rectifier K(+) channel Kir7.1
Host	NZ white rabbit
Purity	Whole serum
Clonality	Polyclonal
Isotype	Polyclonal, whole serum
Applications	IHC, WB (confirmed by recombinant protein). A dilution of 1 : 300 to 1 : 2000 is recommended. The optimal dilution should be determined by the end user. Not yet tested in other applications.
Specificity	Specific for KCNJ13.
Spes X-react.	Human. Other species not yet tested but expected to work in rat and mouse.
Format	Lyophilised
Reconstitution	Reconstitute in 100 µl of sterile water. Centrifuge to remove any insoluble material.
Storage	Maintain the lyophilised/reconstituted antibodies frozen at -20°C for long term storage and refrigerated at 2-8°C for a shorter term. When reconstituting, glycerol (1:1) may be added for an additional stability. Avoid freeze and thaw cycles.
Expiry Date	12 months after reconstitution
Shipping	This item will be shipped to you at ambient temperature in a lyophilised form.
Limitation	For research use only



IHC-P on paraffin sections of human brain. HIER: Tris-EDTA, pH 9 for 20 min using Thermo PT Module. Blocking: 0.2% LFDM in TBST filtered thru 0.2 µm. Detection was done using Novolink HRP polymer from Leica following manufacturers instructions. Primary antibody: dilution 1: 1000, incubated 30 min at RT (using Autostainer). Sections were counterstained with Harris Hematoxylin.

Related Products

OSK00009W	Rabbit antibody to KCNJ13 (200-250)
OSK00070W	Rabbit antibody to KCNJ13 (320-360)