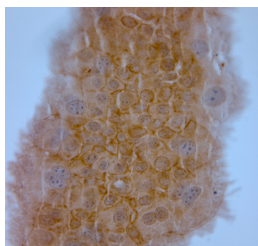


Rabbit antibody to ZO1

Code	OSZ00008W
ID Tag	Rb2977-210317-WS
Unit size	100 µl
Immunogen	A synthetic peptide from mouse ZO1 conjugated to blue carrier protein was used as the antigen.
Conjugate	Unconjugated antibody
Also known	Tight junction protein ZO1, Tight junction protein 1, Zona occludens protein 1, Zonula occludens protein 1, TJP1
Host	NZ white rabbit
Purity	Whole serum
Clonality	Polyclonal
Isotype	Polyclonal, whole serum
Applications	IHC, WB. A dilution of 1: 2000 is recommended. The optimal dilution should be determined by the end user. Not yet tested in other applications.
Specificity	Specific for ZO1.
Spcs X-react.	Mouse, rat. Other species not yet tested but expected to work in human.
Format	Lyophilised
Reconstitution	Reconstitute in 100 µl of sterile water. Centrifuge to remove any insoluble material.
Storage	Maintain the lyophilised/reconstituted antibodies frozen at -20°C for long term storage and refrigerated at 2-8°C for a shorter term. When reconstituting, glycerol (1:1) may be added for an additional stability. Avoid freeze and thaw cycles.
Expiry Date	12 months after reconstitution
Shipping	This item will be shipped to you at ambient temperature in a lyophilised form.
Limitation	For research use only



IHC-P on paraffin sections of mouse bladder.

The animal was perfused using Autoperfuser at a pressure of 130 mmHg with 300 ml 4% FA being processed for paraffin embedding. HIER: Tris-EDTA, pH 9 for 20 min using Thermo PT Module.

Blocking: 0.2% LFDM in TBST filtered thru 0.2 µm.

Detection was done using Novolink HRP polymer from Leica following manufacturers instructions; DAB chromogen: Candela DAB chromogen from Osenses.

Primary antibody: dilution 1: 2000, incubated 30 min at RT using Autostainer.

Sections were counterstained with Harris Hematoxylin.