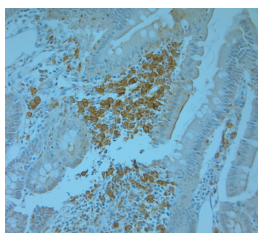


Rabbit antibody to TANK (150-200)

Code	OST00405W
ID Tag	Rb2130-230713-WS
Unit size	100 µl
Immunogen	A synthetic peptide from aa region 150-200 of human TANK conjugated to an immunogenic carrier protein was used as the antigen.
Conjugate	Unconjugated antibody
Also known	TRAF family member associated NF kappa B activator, TRAF interacting protein, TRAF, ITRAF, TRAF2
Host	NZ white rabbit
Purity	Whole serum
Clonality	Polyclonal
Isotype	Polyclonal, whole serum
Applications	IHC, WB (confirmed by recombinant protein). A dilution of 1: 300 to 1: 2000 is recommended. The optimal dilution should be determined by the end user. Not yet tested in other applications.
Specificity	Specific for TANK.
Spcs X-react.	Human. Other species not yet tested but expected to work in mouse and rat.
Format	Lyophilised
Reconstitution	Reconstitute in 100 µl of sterile water. Centrifuge to remove any insoluble material.
Storage	Maintain the lyophilised/reconstituted antibodies frozen at -20°C for long term storage and refrigerated at 2-8°C for a shorter term. When reconstituting, glycerol (1:1) may be added for an additional stability. Avoid freeze and thaw cycles.
Expiry Date	12 months after reconstitution
Shipping	This item will be shipped to you at ambient temperature in a lyophilised form.
Limitation	For research use only



IHC-P on paraffin sections of rat intestine tissue. The animal was perfused using Autoperfuser at a pressure of 110 mmHg with 300 ml 4% FA and further post fixed overnight before being processed for paraffin embedding. HIER: Tris-EDTA, pH 9 for 20 min using Thermo PT Module. Blocking: 0.2% LFDM in TBST filtered thru 0.2 µm. Detection was done using Novolink HRP polymer from Leica following manufacturers instructions. Primary antibody: dilution 1: 1000, incubated 30 min at RT (using Autostainer). Sections were counterstained with Harris Hematoxylin.

Related Products

OST00404W Rabbit antibody to TANK (2-50)
