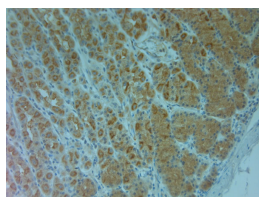


Rabbit antibody to ABCC6 (825-875)

Code	OSA00222W
ID Tag	Rb1967-091212-WS
Unit size	100 µl
Immunogen	A synthetic peptide from aa region 825-875 of human ABCC6 conjugated to blue carrier protein was used as the antigen.
Conjugate	Unconjugated antibody
Also known	Multidrug resistance-associated protein 6, ATP-binding cassette sub-family C member 6, Anthracycline resistance-associated protein, Multi-specific organic anion transporter E, MOAT-E, ARA, MRP6
Host	NZ white rabbit
Purity	Whole serum
Clonality	Polyclonal
Isotype	Polyclonal, whole serum
Applications	IHC, WB (recombinant protein). A dilution of 1 : 300 to 1 : 2000 is recommended. The optimal dilution should be determined by the end user. Not yet tested in other applications.
Specificity	Specific for ABCC6.
Spcs X-react.	Human. Other species not yet tested.
Format	Lyophilised
Reconstitution	Reconstitute in 100 µl of sterile water. Centrifuge to remove any insoluble material.
Storage	Maintain the lyophilised/reconstituted antibodies frozen at -20°C for long term storage and refrigerated at 2-8°C for a shorter term. When reconstituting, glycerol (1:1) may be added for an additional stability. Avoid freeze and thaw cycles.
Expiry Date	12 months after reconstitution
Shipping	This item will be shipped to you at ambient temperature in a lyophilised form.
Limitation	For research use only



IHC on paraffin sections of human stomach tissue using Rabbit antibody to ABCC6 (825-875) OSA00222W.

HIER: 1 mM EDTA, pH 8 for 20 min using Thermo PT Module.

Blocking: 0.2% LFDM in TBST filtered thru 0.2 µm. Detection was done using Novolink HRP polymer from Leica following manufacturer's instructions.

Primary antibody: dilution 1: 1000, incubated 30 min at RT (using Autostainer).

Sections were counterstained with Harris Hematoxylin.