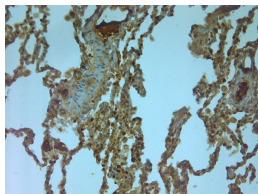


## Rabbit antibody to NMDAR3A (800-850)

|                       |   |
|-----------------------|---|
| <b>Code</b>           | OSN00066W   |
| <b>ID Tag</b>         | Rb1702-021210-WS  |
| <b>Unit size</b>      | 100 µl  |
| <b>Immunogen</b>      | A synthetic peptide from aa region 800-850 of extracellular domain of rat NMDAR3A conjugated to blue carrier protein was used as the antigen. The peptide is homologous in mouse and shares 95% identity with human sequence.                     |
| <b>Conjugate</b>      | Unconjugated antibody   |
| <b>Also known</b>     | NMD3A, Glutamate [NMDA] receptor subunit 3A, Glutamate receptor chi-1, N-methyl-D-aspartate receptor, N-methyl-D-aspartate receptor subtype 3A, NR3A, NMDAR-L, NMDAR-L1   |
| <b>Host</b>           | NZ white rabbit   |
| <b>Purity</b>         | Whole serum   |
| <b>Clonality</b>      | Polyclonal  |
| <b>Isotype</b>        | Polyclonal, whole serum   |
| <b>Applications</b>   | IHC, WB. A dilution of 1 : 300 to 1 : 2000 is recommended. The optimal dilution should be determined by the end user. Not yet tested in other applications.   |
| <b>Specificity</b>    | Specific for NMDAR3A.   |
| <b>Spcs X-react.</b>  | Rat, mouse. Other species not yet tested.   |
| <b>Format</b>         | Lyophilised   |
| <b>Reconstitution</b> | Reconstitute in 100 µl of sterile water. Centrifuge to remove any insoluble material.   |
| <b>Storage</b>        | Maintain the lyophilised/reconstituted antibodies frozen at -20°C for long term storage and refrigerated at 2-8°C for a shorter term. When reconstituting, glycerol (1:1) may be added for an additional stability. Avoid freeze and thaw cycles. |
| <b>Expiry Date</b>    | 12 months after reconstitution  |
| <b>Shipping</b>       | This item will be shipped to you at ambient temperature in a lyophilised form.  |
| <b>Limitation</b>     | For research use only   |



```

/* Font Definitions */
@font-face
{font-family:Arial;
panose-1:2 11 6 4 2 2 2 2 2 4;
mso-font-charset:0;
mso-generic-font-family:auto;
mso-font-pitch:variable;
mso-font-signature:3 0 0 1 0;}
@font-face
{font-family:Cambria;
panose-1:2 4 5 3 5 4 6 3 2 4;
mso-font-charset:0;
mso-generic-font-family:auto;
mso-font-pitch:variable;
mso-font-signature:3 0 0 0 1 0;}
/* Style Definitions */
p.MsoNormal, li.MsoNormal, div.MsoNormal
{mso-style-parent:"";
margin-top:0cm;
margin-right:0cm;

```

## Rabbit antibody to NMDAR3A (800-850)

```
margin-bottom:10.0pt;
margin-left:0cm;
mso-pagination:widow-orphan;
font-size:12.0pt;
font-family:"Times New Roman";
mso-ascii-font-family:Arial;
mso-fareast-font-family:Cambria;
mso-fareast-theme-font:minor-latin;
mso-hansi-font-family:Arial;
mso-bidi-font-family:"Times New Roman";
mso-bidi-theme-font:minor-bidi;}
@page Section1
{size:612.0pt 792.0pt;
margin:72.0pt 90.0pt 72.0pt 90.0pt;
mso-header-margin:36.0pt;
mso-footer-margin:36.0pt;
mso-paper-source:0;}
div.Section1
{page:Section1;}
-->
```

IHC on paraffin sections of human lung tissue using Rabbit antibody to NMDAR3A (800-850): OSN00066W.

HIER: 1 mM EDTA, pH 8 for 20 min using Thermo PT Module.

Blocking: 0.2% LFDM in TBST filtered thru 0.2 µm.

Detection was done using Novolink HRP polymer from Leica following manufacturer's instructions.

Primary antibody: dilution 1: 1000, incubated 30 min at RT (using Autostainer).

Sections were counterstained with Harris Hematoxylin.