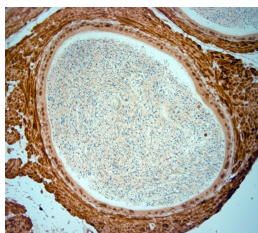


## Rabbit antibody to AQP4

|                       |   |
|-----------------------|---|
| <b>Code</b>           | OSA00155W   |
| <b>ID Tag</b>         | Rb969-280609-WS   |
| <b>Unit size</b>      | 100 µl  |
| <b>Immunogen</b>      | A synthetic peptide from mouse AQP4 conjugated to blue carrier protein was used as the antigen. The peptide is homologous in rat.   |
| <b>Conjugate</b>      | Unconjugated antibody   |
| <b>Also known</b>     | Aquaporin-4, AQP-4, AQP4, Aquaporin4, WCH4, MIWC  |
| <b>Host</b>           | NZ white rabbit   |
| <b>Purity</b>         | Whole serum   |
| <b>Clonality</b>      | Polyclonal  |
| <b>Isotype</b>        | Polyclonal, whole serum   |
| <b>Applications</b>   | IHC, WB. A dilution of 1 : 1000 is recommended. The optimal dilution should be determined by the end user. Not yet tested in other applications.  |
| <b>Specificity</b>    | Specific for AQP4.  |
| <b>Spcs X-react.</b>  | Mouse, rat. Other species not yet tested but expected to work in marmoset and human.  |
| <b>Format</b>         | Lyophilised   |
| <b>Reconstitution</b> | Reconstitute in 100 µl of sterile water. Centrifuge to remove any insoluble material.   |
| <b>Storage</b>        | Maintain the lyophilised/reconstituted antibodies frozen at -20°C for long term storage and refrigerated at 2-8°C for a shorter term. When reconstituting, glycerol (1:1) may be added for an additional stability. Avoid freeze and thaw cycles. |
| <b>Expiry Date</b>    | 12 months after reconstitution  |
| <b>Shipping</b>       | This item will be shipped to you at ambient temperature in a lyophilised form.  |
| <b>Limitation</b>     | For research use only   |



IHC-P on paraffin sections of mouse epididymis.

The animal was perfused using Autoperfuser at a pressure of 130 mmHg with 300 ml 4% FA being processed for paraffin embedding. HIER: Tris-EDTA, pH 9 for 20 min using Thermo PT Module.

Blocking: 0.2% LFDM in TBST filtered thru 0.2 µm.

Detection was done using Novolink HRP polymer from Leica following manufacturers instructions; DAB chromogen: Candela DAB chromogen from Osenses.

Primary antibody: dilution 1: 1000, incubated 30 min at RT using Autostainer.

Sections were counterstained with Harris Hematoxylin.