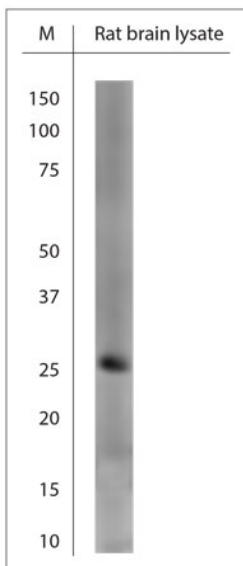


Rabbit antibody to OLIG1 (125-175)

Code	OSO00051W
ID Tag	Rb2309-150114-WS
Unit size	100 µl
Immunogen	A synthetic peptide from aa region 125-175 of mouse OLIG1 conjugated to blue carrier protein was used as the antigen. The peptide is homologous in rat.
Conjugate	Unconjugated antibody
Also known	Oligodendrocyte transcription factor 1, Oligodendrocyte-specific bHLH transcription factor 1
Host	NZ white rabbit
Purity	Whole serum
Clonality	Polyclonal
Isotype	Polyclonal, whole serum
Applications	IHC, WB (confirmed by recombinant protein). A dilution of 1 : 300 to 1 : 2000 is recommended. The optimal dilution should be determined by the end user. Not yet tested in other applications.
Specificity	Specific for OLIG1.
Spcs X-react.	Mouse, rat. Other species not yet tested.
Format	Lyophilised
Reconstitution	Reconstitute in 100 µl of sterile water. Centrifuge to remove any insoluble material.
Storage	Maintain the lyophilised/reconstituted antibodies frozen at -20°C for long term storage and refrigerated at 2-8°C for a shorter term. When reconstituting, glycerol (1:1) may be added for an additional stability. Avoid freeze and thaw cycles.
Expiry Date	12 months after reconstitution
Shipping	This item will be shipped to you at ambient temperature in a lyophilised form.
Limitation	For research use only



WB on rat brain lysate using Rabbit antibody to OLIG1 (125-175) (OSO00051W) at 1:500 dilution. Incubated 30 min at RT with shake.
Blocking: 0.5% LFDM in 1x PBS containing 0.1% Tween-20

Related Products

OSO00056W	Rabbit antibody to OLIG1 (170-220)
OSO00052W	Rabbit antibody to OLIG1 (5-50)