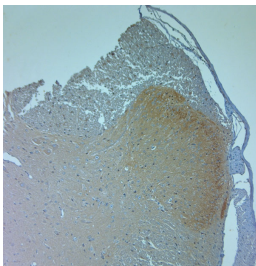


Rabbit antibody to Ankyrin G (2600-2650)

| | |
|-----------------------|---|
| Code | OSA00143W |
| ID Tag | Rb1578-120910-WS |
| Unit size | 100 µl |
| Immunogen | A synthetic peptide from aa region 2600-2650 of human Ankyrin G conjugated to blue carrier protein was used as the antigen. |
| Conjugate | Unconjugated antibody |
| Also known | ANK-3, Ankyrin G |
| Host | NZ white rabbit |
| Purity | Whole serum |
| Clonality | Polyclonal |
| Isotype | Polyclonal, whole serum |
| Applications | IHC, WB (confirmed by recombinant protein). A dilution of 1 : 300 to 1 : 2000 is recommended. The optimal dilution should be determined by the end user. Not yet tested in other applications. |
| Specificity | Specific for ANKG. |
| Spcs X-react. | Human. Other species not yet tested. |
| Format | Lyophilised |
| Reconstitution | Reconstitute in 100 µl of sterile water. Centrifuge to remove any insoluble material. |
| Storage | Maintain the lyophilised/reconstituted antibodies frozen at -20°C for long term storage and refrigerated at 2-8°C for a shorter term. When reconstituting, glycerol (1:1) may be added for an additional stability. Avoid freeze and thaw cycles. |
| Expiry Date | 12 months after reconstitution |
| Shipping | This item will be shipped to you at ambient temperature in a lyophilised form. |
| Limitation | For research use only |



Rat spinal cord-1