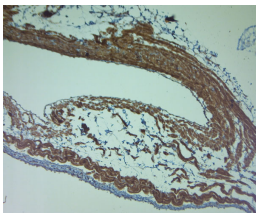


Rabbit antibody to SAP97 (2-50)

Code	OSD00038W
ID Tag	Rb1572-120910-WS
Unit size	100 µl
Immunogen	A synthetic peptide from aa region 2-50 of human SAP97 conjugated to blue carrier protein was used as the antigen. The peptide is homologous in rat and mouse.
Conjugate	Unconjugated antibody
Also known	DLG1, Disks large homolog 1, Synapse-associated protein 97
Host	NZ white rabbit
Purity	Whole serum
Clonality	Polyclonal
Isotype	Polyclonal, whole serum
Applications	IHC, WB (confirmed by recombinant protein). A dilution of 1: 200 to 1: 2000 is recommended. The optimal dilution should be determined by the end user. Not yet tested in other applications.
Specificity	Specific for SAP97.
Spcs X-react.	Human, rat, mouse. Other species not yet tested.
Format	Lyophilised
Reconstitution	Reconstitute in 100 µl of sterile water. Centrifuge to remove any insoluble material.
Storage	Maintain the lyophilised/reconstituted antibodies frozen at -20°C for long term storage and refrigerated at 2-8°C for a shorter term. When reconstituting, glycerol (1:1) may be added for an additional stability. Avoid freeze and thaw cycles.
Expiry Date	12 months after reconstitution
Shipping	This item will be shipped to you at ambient temperature in a lyophilised form.
Limitation	For research use only



```

/* Font Definitions */
@font-face
{font-family:Arial;
panose-1:2 11 6 4 2 2 2 2 4;
mso-font-charset:0;
mso-generic-font-family:auto;
mso-font-pitch:variable;
mso-font-signature:3 0 0 0 1 0;}
@font-face
{font-family:Cambria;
panose-1:2 4 5 3 5 4 6 3 2 4;
mso-font-charset:0;
mso-generic-font-family:auto;
mso-font-pitch:variable;
mso-font-signature:3 0 0 0 1 0;}
/* Style Definitions */
p.MsoNormal, li.MsoNormal, div.MsoNormal
{mso-style-parent:"";
margin-top:0cm;
margin-right:0cm;
margin-bottom:10.0pt;
margin-left:0cm;

```

Rabbit antibody to SAP97 (2-50)

```
mso-pagination:widow-orphan;  
font-size:12.0pt;  
font-family:"Times New Roman";  
mso-ascii-font-family:Arial;  
mso-fareast-font-family:Cambria;  
mso-fareast-theme-font:minor-latin;  
mso-hansi-font-family:Arial;  
mso-bidi-font-family:"Times New Roman";  
mso-bidi-theme-font:minor-bidi;}  
@page Section1  
{size:612.0pt 792.0pt;  
margin:72.0pt 90.0pt 72.0pt 90.0pt;  
mso-header-margin:36.0pt;  
mso-footer-margin:36.0pt;  
mso-paper-source:0;}  
div.Section1  
{page:Section1;}  
-->
```

IHC on paraffin sections of rat heart tissue using Rabbit antibody to SAP97 (2-50):
OSD00038W.

HIER: 1 mM EDTA, pH 8 for 20 min using Thermo PT Module.

Blocking: 0.2% LFDM in TBST filtered thru 0.2 µm.

Detection was done using Novolink HRP polymer from Leica following manufacturer's instructions.

Primary antibody: dilution 1: 1000, incubated 30 min at RT (using Autostainer).

Sections were counterstained with Harris Hematoxylin.