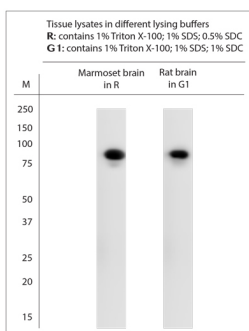


Rabbit antibody to PSD95

Code	OSD00037W
ID Tag	Rb1571-120910-WS
Unit size	100 ul
Immunogen	A synthetic peptide from n-terminal region of human PSD95 conjugated to blue carrier protein was used as the antigen. The peptide is homologous in rat and mouse.
Conjugate	Unconjugated antibody
Also known	Disks large homolog 4, Postsynaptic density protein 95, PSD-95, Synapse-associated protein 90, SAP-90, SAP90, DLG4
Host	NZ white rabbit
Purity	Whole serum
Clonality	Polyclonal
Isotype	Polyclonal, whole serum
Applications	IHC, WB. A dilution of 1: 1000 to 1:2000 is recommended. The optimal dilution should be determined by the end user. Not yet tested in other applications.
Specificity	Specific for PSD95.
Spcs X-react.	Human, marmoset, rat, mouse. Other species not yet tested.
Format	Lyophilised. This product contains 0.02% benzalkonium chloride.
Reconstitution	Reconstitute in 100 ul of sterile water. Centrifuge to remove any insoluble material.
Storage	Maintain the lyophilised/reconstituted antibodies frozen at -20C for long term storage and refrigerated at 2-8C for a shorter term. When reconstituting, glycerol (1:1) may be added for an additional stability. Avoid freeze and thaw cycles.
Expiry Date	12 months after reconstitution
Shipping	This item will be shipped to you at ambient temperature in a lyophilised form.
Limitation	For research use only



WB on brain lysates prepared in different lysing buffers. Blocking: 1% LFDM for 30 min at RT; primary antibody dilution 1:2000 incubated at 4C overnight. Click on eLAB BOOK tab to see the details.