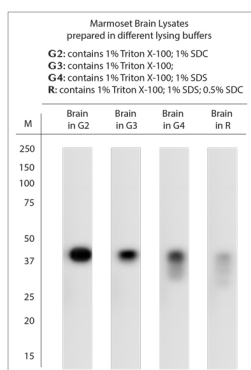


Rabbit antibody to TAAR1

Code	OST00351W
ID Tag	Rb1401-250410-WS
Unit size	100 µl
Immunogen	A synthetic peptide from mouse TAAR conjugated to blue carrier protein was used as the antigen.
Conjugate	Unconjugated antibody
Also known	Trace amine receptor 1, TaR-1, Ta1, Tar1, Trar1
Host	NZ white rabbit
Purity	Whole serum
Clonality	Polyclonal
Isotype	Polyclonal, whole serum
Applications	IHC, WB. A dilution of 1 : 1000 to 1 : 2000 is recommended. The optimal dilution should be determined by the end user.
Specificity	Specific for TAAR1.
Spcs X-react.	Mouse, marmoset, human. Other species not yet tested.
Format	Lyophilised
Reconstitution	Reconstitute in 100 µl of sterile water. Centrifuge to remove any insoluble material.
Storage	Maintain the lyophilised/reconstituted antibodies frozen at -20°C for long term storage and refrigerated at 2-8°C for a shorter term. When reconstituting, glycerol (1:1) may be added for an additional stability. Avoid freeze and thaw cycles.
Expiry Date	12 months after reconstitution
Shipping	This item will be shipped to you at ambient temperature in a lyophilised form.
Limitation	For research use only



WB on marmoset brain lysates. Blocking with 0.5% LFDM for 30 min at RT; Primary antibody used at 1:1000 dilution incubated overnight at 4°C. Click on eLAB BOOK tab to see the details.