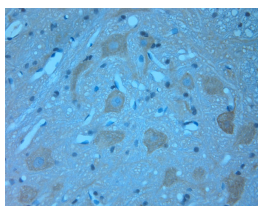


Rabbit antibody to TRIM32 (160-210)

Code	OST00344W
ID Tag	Rb1344-140310-WS
Unit size	100 µl
Immunogen	A synthetic peptide from aa region 160-210 of mouse TRIM32 conjugated to blue carrier protein was used as the antigen. The peptide is homologous in rat and shares 95% identity with human sequence.
Conjugate	Unconjugated antibody
Also known	TRI32, Tripartite motif-containing protein 32, TRIM32
Host	NZ white rabbit
Purity	Whole serum
Clonality	Polyclonal
Isotype	Polyclonal, whole serum
Applications	IHC, WB. A dilution of 1: 1000 to 1 : 3000 is recommended. The optimal dilution should be determined by the end user. Not yet tested in other applications.
Specificity	Specific for TRIM32.
Spcs X-react.	Mouse, rat. Other species not yet tested but expected to work in human.
Format	Lyophilised
Reconstitution	Reconstitute in 100 µl of sterile water. Centrifuge to remove any insoluble material.
Storage	Maintain the lyophilised/reconstituted antibodies frozen at -20°C for long term storage and refrigerated at 2-8°C for a shorter term. When reconstituting, glycerol (1:1) may be added for an additional stability. Avoid freeze and thaw cycles.
Expiry Date	12 months after reconstitution
Shipping	This item will be shipped to you at ambient temperature in a lyophilised form.
Limitation	For research use only



IHC-P on paraffin sections of rat spinal cord. The animal was perfused using Autoperfuser at a pressure of 110 mmHg with 300 ml 4% FA and further post fixed overnight before being processed for paraffin embedding. HIER: Tris-EDTA, pH 9 for 20 min using Thermo PT Module. Blocking: 0.2% LFDM in TBST filtered thru 0.2 µm. Detection was done using Novolink HRP polymer from Leica following manufacturers instructions. Primary antibody: dilution 1: 1000, incubated 30 min at RT (using Autostainer). Sections were counterstained with Harris Hematoxylin.