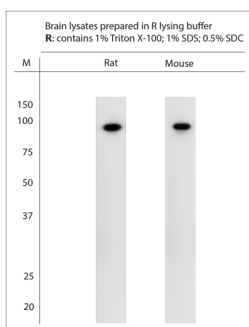


Rabbit antibody to Lingo1

Code	OSL00012W
ID Tag	Rb1359-140310-WS
Unit size	100 µl
Immunogen	A synthetic peptide from c-terminal region of human Lingo1 conjugated to blue carrier protein was used as the antigen. The peptide is homologous in many other species.
Conjugate	Unconjugated antibody
Also known	LIGO1, Leucine-rich repeat and immunoglobulin-like domain-containing nogo receptor-interacting protein 1, Leucine-rich repeat and immunoglobulin domain-containing protein 1, Leucine-rich repeat neuronal protein 6A, Leucine-rich repeat neuronal protein 1, LERN1, LRRN6A
Host	NZ white rabbit
Purity	Whole serum
Clonality	Polyclonal
Isotype	Polyclonal, whole serum
Applications	IHC, WB. A dilution of 1 : 3000 is recommended for WB and 1:1000 for IHC-P. The optimal dilution should be determined by the end user. Not yet tested in other applications.
Specificity	Specific for Lingo1.
Spcs X-react.	Human, rat, mouse. Other species not yet tested.
Format	Lyophilised
Reconstitution	Reconstitute in 100 µl of sterile water. Centrifuge to remove any insoluble material.
Storage	Maintain the lyophilised/reconstituted antibodies frozen at -20°C for long term storage and refrigerated at 2-8°C for a shorter term. When reconstituting, glycerol (1:1) may be added for an additional stability. Avoid freeze and thaw cycles.
Expiry Date	12 months after reconstitution
Shipping	This item will be shipped to you at ambient temperature in a lyophilised form.
Limitation	For research use only



WB on brain lysates. Blocking with 1% LFDM for 30 min at RT; Primary antibody used at 1:3000 dilution incubated overnight at 4°C. Click on eLAB BOOK tab to see the details.