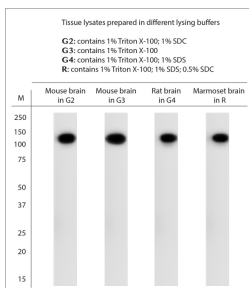


Rabbit antibody to KCNMA1

Code	OSP00105W
ID Tag	Rb3125-241117-WS
Unit size	100 ul
Immunogen	A synthetic peptide from rat KCNMA1 conjugated to blue carrier protein was used as the antigen. The peptide is homologous in mouse.
Conjugate	Unconjugated antibody
Also known	Potassium channel subfamily M subunit alpha 1, Calcium-activated potassium channel subunit alpha-1, Calcium-activated potassium channel, subfamily M subunit alpha-1, Maxi K channel, MaxiK, BK channel, K(VCA)alpha, BKCA alpha, KCa1.1, Slowpoke homolog, Slo homolog, Slo-alpha, Slo1, Slo
Host	NZ white rabbit
Purity	Whole serum
Clonality	Polyclonal
Isotype	Polyclonal, whole serum
Applications	IHC, WB. A dilution of 1 : 2000 is recommended. The optimal dilution should be determined by the end user. Not yet tested in other applications.
Specificity	Specific for KCNMA1.
Spcs X-react.	Rat, mouse, marmoset. Other species not yet tested.
Format	Lyophilised
Reconstitution	Reconstitute in 100 ul of sterile water. Centrifuge to remove any insoluble material.
Storage	Maintain the lyophilised/reconstituted antibodies frozen at -20C for long term storage and refrigerated at 2-8C for a shorter term. When reconstituting, glycerol (1:1) may be added for an additional stability. Avoid freeze and thaw cycles.
Expiry Date	12 months after reconstitution
Shipping	This item will be shipped to you at ambient temperature in a lyophilised form.
Limitation	For research use only



WB on tissue lysates. Blocking: 1% LFDM for 30 min at RT; primary antibody: dilution 1:2000 incubated overnight at 4C. Click on eLAB BOOK tab to see the details.