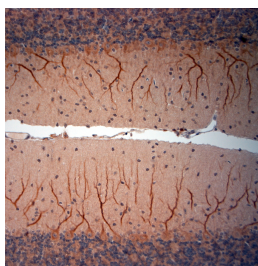


Rabbit antibody to ATP5A1 (500-550)

Code	OSA00116W
ID Tag	Rb1203-051209-WS
Unit size	100 µl
Immunogen	A synthetic peptide from aa region 500-550 of human ATP5A1 conjugated to blue carrier protein was used as the antigen. The peptide is homologous in rat and mouse.
Conjugate	Unconjugated antibody
Also known	ATPA, mitochondrial ATP synthase subunit alpha, ATP synthase subunit alpha, mitochondrial, ATP5A, ATP5AL2, ATPM
Host	NZ white rabbit
Purity	Whole serum
Clonality	Polyclonal
Isotype	Polyclonal, whole serum
Applications	IHC, WB. A dilution of 1: 2000 for IHC-P and 1:3000 for WB is recommended. The optimal dilution should be determined by the end user. Not yet tested in other applications.
Specificity	Specific for ATP5A1.
Spcs X-react.	Human, mouse, rat. Other species not yet tested.
Format	Lyophilised
Reconstitution	Reconstitute in 100 µl of sterile water. Centrifuge to remove any insoluble material.
Storage	Maintain the lyophilised/reconstituted antibodies frozen at -20°C for long term storage and refrigerated at 2-8°C for a shorter term. When reconstituting, glycerol (1:1) may be added for an additional stability. Avoid freeze and thaw cycles.
Expiry Date	12 months after reconstitution
Shipping	This item will be shipped to you at ambient temperature in a lyophilised form.
Limitation	For research use only



IHC-P on paraffin sections of mouse cerebellum.
 The animal was perfused using Autoperfuser at a pressure of 130 mmHg with 300 ml 4% FA before being processed for paraffin embedding. HIER: Tris-EDTA, pH 9 for 20 min using Thermo PT Module.
 Blocking: 0.2% LFD in TBST filtered thru 0.2 µm.
 Detection was done using Novolink HRP polymer from Leica following manufacturers instructions; DAB chromogen: Candela DAB chromogen from Osenses.
 Primary antibody: dilution 1: 2000, incubated 30 min at RT using Autostainer.
 Sections were counterstained with Harris Hematoxylin.