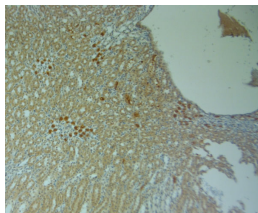


Rabbit antibody to Connexin 40

Code	OSC00189W
ID Tag	Rb1191-260909-WS
Unit size	100 ul
Immunogen	A synthetic peptide from mouse Connexin-40 conjugated to an blue carrier protein was used as the antigen. The peptide shares 95% identity with rat sequence.
Conjugate	Unconjugated antibody
Also known	CXA5, Gap junction alpha-5 protein, Connexin 40, Connexin40, GJA5
Host	NZ white rabbit
Purity	Whole serum
Clonality	Polyclonal
Isotype	Polyclonal, whole serum
Applications	IHC, WB. A dilution of 1 : 300 to 1 : 2000 is recommended. The optimal dilution should be determined by the end user. Not yet tested in other applications.
Specificity	Specific for Connexin-40.
Spcs X-react.	Mouse. Other species not yet tested but expected to work in rat.
Format	Lyophilised
Reconstitution	Reconstitute in 100 ul of sterile water. Centrifuge to remove any insoluble material.
Storage	Maintain the lyophilised/reconstituted antibodies frozen at -20C for long term storage and refrigerated at 2-8C for a shorter term. When reconstituting, glycerol (1:1) may be added for an additional stability. Avoid freeze and thaw cycles.
Expiry Date	12 months after reconstitution
Shipping	This item will be shipped to you at ambient temperature in a lyophilised form.
Limitation	For research use only



IHC on paraffin sections of rat kidney tissue using Rabbit antibody to Connexin 40: OSC00189W. HIER: 1 mM EDTA, pH 8 for 20 min using Thermo PT Module. Blocking: 0.2% LFDM in TBST filtered thru 0.2 µm. Detection was done using Novolink HRP polymer from Leica following manufactures instructions. Primary antibody: dilution 1: 1000, incubated 30 min at RT (using Autostainer. Sections were counterstained with Harris Hematoxylin.