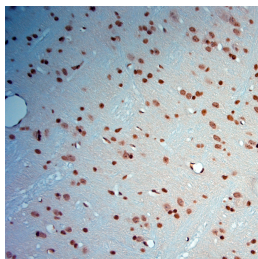


Rabbit antibody to c Fos

Code	OSC00183G
ID Tag	Rb2500-140415-WS
Unit size	500 Å, Åµg
Immunogen	A synthetic peptide from human cFos protein conjugated to blue carrier protein has been used as the antigen. The peptide is homologous in many other species including rat, mouse, hamster and cat.
Purity	Whole serum
Conjugate	Unconjugated antibody
Also known	Proto-oncogene protein cFOS, c-Fos
Host	NZ white rabbit
Purity	Whole serum
Clonality	Polyclonal antibody
Isotype	Polyclonal, whole serum
Applications	IHC, WB. Use at a concentration of 2-5 µg/ml. The optimal concentration should be determined by the end user. Not yet tested in other applications. For WB tissue lysates prepared in the G1 lysing buffer is recommended (G1 lysing buffer is Ripa buffer containing 1% Triton-X100; 1% SDS and 1% SDC).
Specificity	Specific for cFOS.
Spcls X-react.	Rat, mouse, marmoset, human. Other species not yet tested.
Format	Lyophilised
Reconstitution	Reconstitute in 500 µl of sterile water. Centrifuge to remove any insoluble material.
Storage	Maintain the lyophilised/reconstituted antibodies frozen at -20°C for long term storage and refrigerated at 2-8°C for a shorter term. When reconstituting, glycerol (1:1) may be added for an additional stability. Avoid freeze and thaw cycles.
Expiry Date	12 months after purchase
Shipping	This item will be shipped to you at ambient temperature in a lyophilised form.
Limitation	For research use only



IHC-P on paraffin sections of rat brain.

The animal was perfused using Autoperfuser at a pressure of 130 mmHg with 300 ml 4% FA being processed for paraffin embedding. HIER: Tris-EDTA, pH 9 for 20 min using Thermo PT Module.

Blocking: 0.2% LFDM in TBST filtered thru 0.2 µm.

Detection was done using Novolink HRP polymer from Leica following manufacturers instructions; DAB chromogen: Candela DAB chromogen from Osenses.

Primary antibody: dilution 10 µg/ml, incubated 30 min at RT using Autostainer.

Sections were counterstained with Harris Hematoxylin.

Related Products

OSR00004W	Rabbit antibody to cFos
OSC00040W	Rabbit antibody to cFos
OSC00011G	Sheep antibody to cFos
OSC00007W	Sheep antibody to cFos
OSC00166W	Goat antibody to cFos