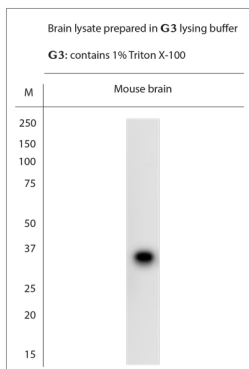


Rabbit antibody to Syntaxin2

Code	OSS00171W
ID Tag	Rb3004-090417-WS
Unit size	100 µl
Immunogen	A synthetic peptide from mouse Syntaxin2 conjugated to blue carrier protein was used as the antigen.
Conjugate	Unconjugated antibody
Also known	STX2, Epimorphin, STX2, EPIM, STX2A, STX2B, STX2C
Host	NZ white rabbit
Purity	Whole serum
Clonality	Polyclonal
Isotype	Polyclonal, whole serum
Applications	IHC, WB. A dilution of 1 : 1000 to 1:1500 is recommended. The optimal dilution should be determined by the end user. Not yet tested in other applications.
Specificity	Specific for Syntaxin2.
Spcs X-react.	Rat, mouse. Other species not yet tested.
Format	Lyophilised
Reconstitution	Reconstitute in 100 µl of sterile water. Centrifuge to remove any insoluble material.
Storage	Maintain the lyophilised/reconstituted antibodies frozen at -20°C for long term storage and refrigerated at 2-8°C for a shorter term. When reconstituting, glycerol (1:1) may be added for an additional stability. Avoid freeze and thaw cycles.
Expiry Date	12 months after reconstitution
Shipping	This item will be shipped to you at ambient temperature in a lyophilised form.
Limitation	For research use only



WB on brain lysate. Blocking: 1% LFDM for 30 min at RT; primary antibody: dilution 1:1500 incubated at 4C overnight. Click on eLAB BOOK tab to see the details.