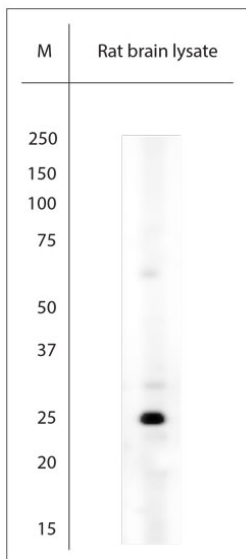


Rabbit antibody to RAB3A (2-50)

Code	OSR00336W
ID Tag	Rb1081-020809-WS
Unit size	100 µl
Immunogen	A synthetic peptide from aa region 2-50 of mouse RAB3A conjugated to blue carrier protein has been used as the antigen. The antigen is homologous for RAB3B, C, D in human and rat.
Conjugate	Unconjugated antibody
Also known	RAB3A
Host	NZ white rabbit
Purity	Whole serum
Clonality	Polyclonal
Isotype	Polyclonal, whole serum
Applications	IHC, WB. Use at a dilution of 1:4000 to 1: 5000. The optimal dilution should be determined by the end user. Not yet tested in other applications.
Specificity	Specific for RAB3.
Spcs X-react.	Human, mouse, rat. Other species not yet tested.
Format	Lyophilised
Reconstitution	Reconstitute in 100 µl of sterile water. Centrifuge to remove any insoluble material.
Storage	Maintain the lyophilised/reconstituted antibodies frozen at -20°C for long term storage and refrigerated at 2-8°C for a shorter term. When reconstituting, glycerol (1:1) may be added for an additional stability. Avoid freeze and thaw cycles.
Expiry Date	12 months after reconstitution
Shipping	This item will be shipped to you at ambient temperature in a lyophilised form.
Limitation	For research use only



WB on rat brain lysate. Blocking with 1% LFDM for 30 min at RT; Primary antibody used at 1:4000 dilution incubated overnight at 4°C. Click on eLAB BOOK tab to see the details.