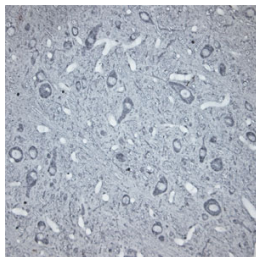


## Rabbit antibody to beta Tubulin

|                       |   |
|-----------------------|---|
| <b>Code</b>           | OST00306W   |
| <b>ID Tag</b>         | Rb1025-280609-WS  |
| <b>Unit size</b>      | 150 µl  |
| <b>Immunogen</b>      | A synthetic peptide from the c-terminal region of human Tubulin beta chain conjugated to blue carrier protein was used as the antigen. The peptide is homologous in many other species including rat, mouse, zebrafish and xenopus.               |
| <b>Conjugate</b>      | Unconjugated antibody   |
| <b>Also known</b>     | TBB5, Tubulin beta-5 chain, TUBB, TUBB5, Tubulin beta-2A chain, TUBB2A, TUBB2, Tubulin beta-2B chain, Tubulin beta-2C chain   |
| <b>Host</b>           | NZ white rabbit   |
| <b>Purity</b>         | Whole serum   |
| <b>Clonality</b>      | Polyclonal  |
| <b>Isotype</b>        | Polyclonal, whole serum   |
| <b>Applications</b>   | IHC, WB. A dilution of 1: 100 to 1: 2000 is recommended. The optimal dilution should be determined by the end user. Not yet tested in other applications.   |
| <b>Specificity</b>    | Specific for Tubulin beta chain.  |
| <b>Spcs X-react.</b>  | Mouse, rat, human, xenopus, zebrafish. Not yet tested in other species.   |
| <b>Format</b>         | Lyophilised   |
| <b>Reconstitution</b> | Reconstitute in 150 µl of sterile water. Centrifuge to remove any insoluble material.   |
| <b>Storage</b>        | Maintain the lyophilised/reconstituted antibodies frozen at -20°C for long term storage and refrigerated at 2-8°C for a shorter term. When reconstituting, glycerol (1:1) may be added for an additional stability. Avoid freeze and thaw cycles. |
| <b>Expiry Date</b>    | 12 months after reconstitution  |
| <b>Shipping</b>       | This item will be shipped to you at ambient temperature in a lyophilised form.  |
| <b>Limitation</b>     | For research use only   |



IHC on rat spinal cord (paraffin section) using Rabbit antibody to beta Tubulin (OST00306W) at 1 : 200 dilution incubated overnight at 4C, developed with DAB/Ni.

---

### Related Products

OST00359G Rabbit antibody to Tubulin beta

---